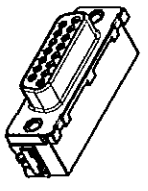


Anschlussbereich verzinkt
terminal area tin plating

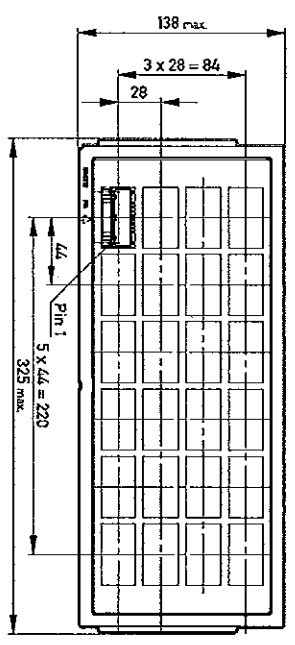
Kopplanarität der Anschlüsse ≤ 0.1 mm
coplanarity area of termination ≤ 0.1 mm

Anforderungsstufe: 2
class: 2



394045	174441	Ø3.2			
174989	154242		#4-40	M3	
225034	154240		#4-40	M3	
394982	154239		M3		
Ident-Nr. part-no. Gurt tape on reel	Ident-Nr. part-no. Trey		ohne without	Mutter nut	Bolzen bolt
					Bemerkung remark

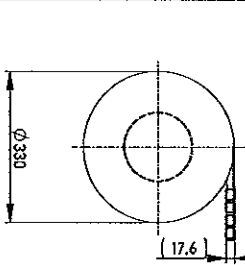
Verpackt in Tray
Verpackungseinheit 24 Stück
tray packaging
packaging unit 24



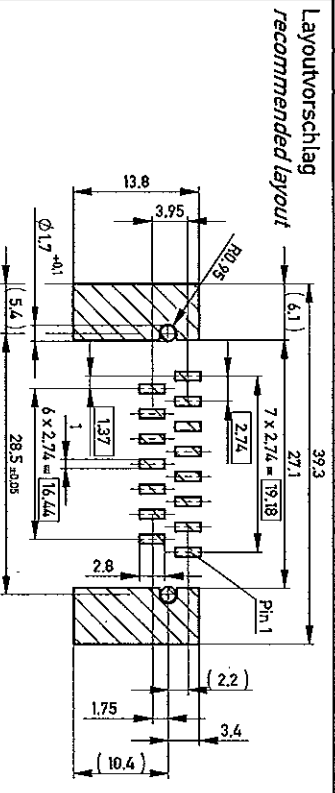
Sonstige Angaben siehe Zeichnung 204629 / additional indications according to drawing 204629

Verpackt in Gurtverpackung - Tape on Reel Packaging
Verpackungseinheit: 75 Stück - Packaging unit: 75 pcs

Abspürrichtung - Reel off Direction



Sonstige Angaben siehe Zeichnung 204655 / additional indications according to drawing 204655



Fehlende Masse und Angaben siehe DIN 41652 / Missing information and dimensions according to DIN 41652

Sonstige Angaben siehe Fertigungsunterlagen / Additional indications according to production documentation

Information	Tolerances	Designation
All rights reserved. Only for information. To ensure that this is the latest version of this drawing, please contact one of the ERNI companies before using.	Scale 2:1	TMC-S-15-SMD-Standard-BA8 TMC-S-15-SMD-Standard-BA8
Subject to modification without prior notice. Drawing will not be updated.	ADimensionen in mm	144840
www.ERNI.com	Scale 2:1	1
www.ERNI.com	Scale 2:1	A3