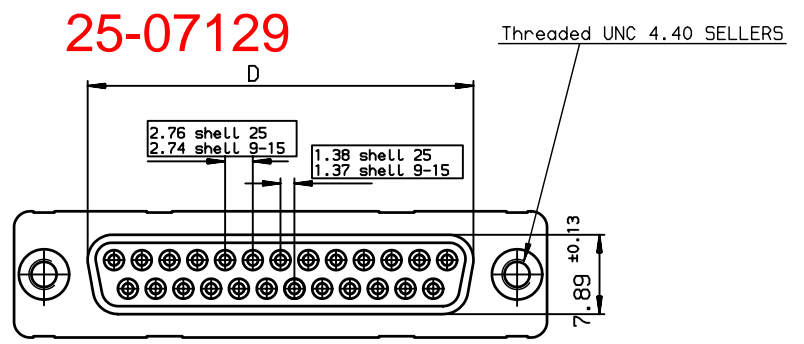
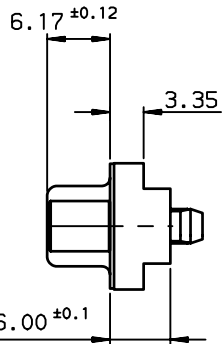
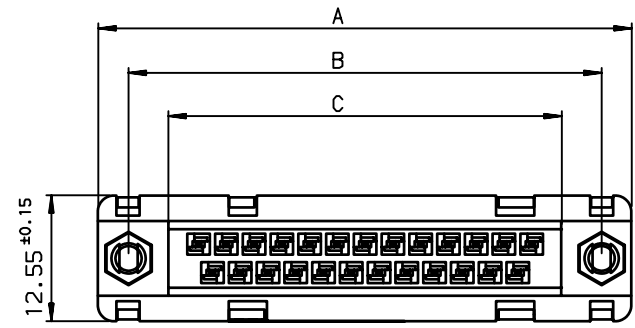


1

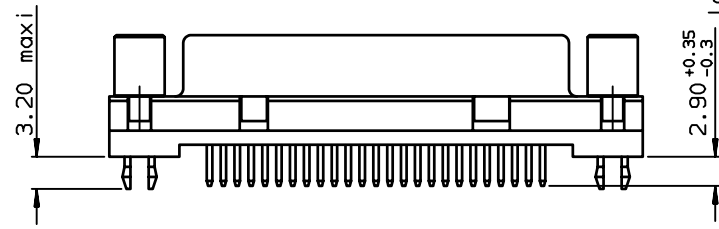
2

3

4

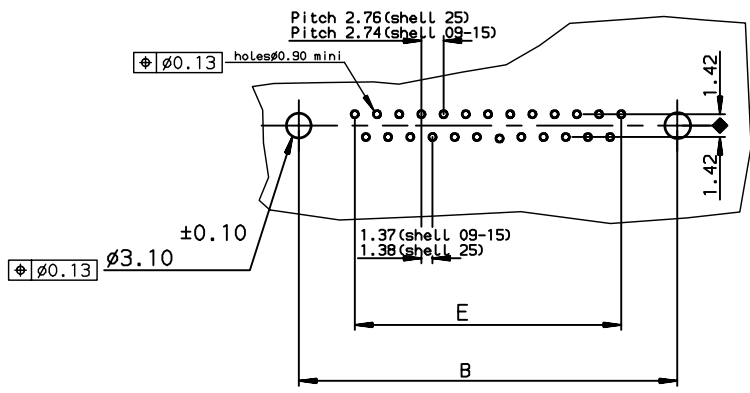


SHELL	A ± 0.38	B ± 0.12	C ± 0.10	D ± 0.25	E ± 0.07
09	30.81	24.99	16.96	16.21	10.96
15	39.14	33.32	25.18	24.54	19.18
25	53.03	47.04	39.12	38.25	33.12



Core range					
SHELL	TIN LEAD P/N	LEAD FREE P/N	DESIGNATIONS		
09	D09S24A4GV00	D09S24A4GV00LF	RECEPTACLE 9 CTS STRAIGHT-SOLDER TO BOARD-PCB HARPOON-SCREWLOCK UNC 4.40-ELEC.CONTIN.-PERFORM. LEVEL PL3		
15	D15S24A4GV00	D15S24A4GV00LF	RECEPTACLE 15 CTS STRAIGHT-SOLDER TO BOARD-PCB HARPOON-SCREWLOCK UNC 4.40-ELEC.CONTIN.-PERFORM. LEVEL PL3		
25	D25S24A4GV00	D25S24A4GV00LF	RECEPTACLE 25 CTS STRAIGHT-SOLDER TO BOARD-PCB HARPOON-SCREWLOCK UNC 4.40-ELEC.CONTIN.-PERFORM. LEVEL PL3		

PC card drilling dimensions(after plating)
(thickness 1.60±0.20mm)



GENERAL CHARACTERISTICS AND ROHS INFORMATIONS:
SEE DRAWING C01-8646-0000

European Views

www.fciconnect.com		surface ISO 1302 ✓	tolerance std ISO 406 ISO 1101	projection mm
TOLERANCES UNLESS OTHERWISE SPECIFIED				
Dr	JOUBERT	2000/12/21	0.X ± 0.1	size A3 Scale 2
Eng	PESSON	2000/12/21	0.XX ± 0.1	ECN LS06-0097
Chr	LEGARE	2000/12/21	0.XXX ± 0.1	
Appr	LEGARE	2000/12/21	ANGULAR ± 2°	LINEAR
Product family			D-SUB	Spec ref -
title		RECEPTACLE STD EUROPE		Rev. G
catalog no		C01-8646-0752		sheet 1 of 1

rev	ecn no	dr	date
D	-	SBA	2003/04/16
E	LS05-001	MPE	2005/03/14
F	-	-	-
G	LS06-0097	LGO	2006/07/28
-	-	-	-
-	-	-	-
-	-	-	-

Copyright FCI.