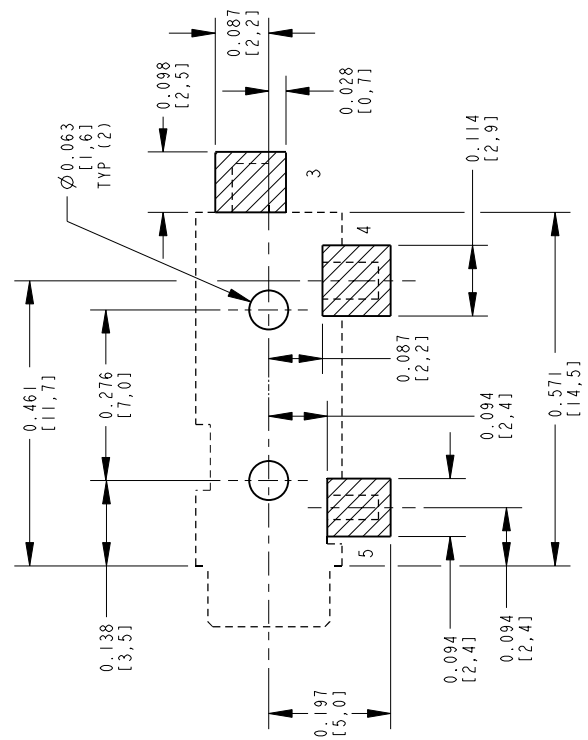
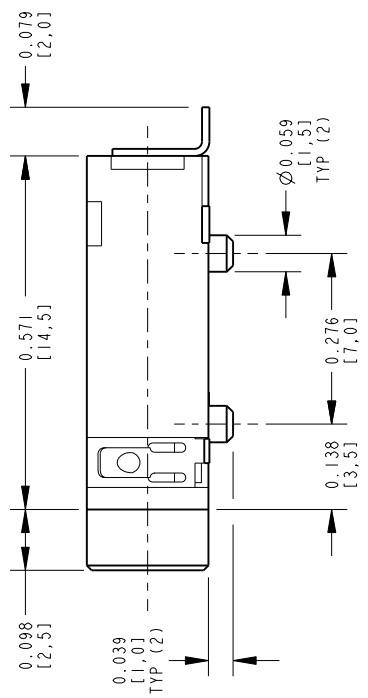
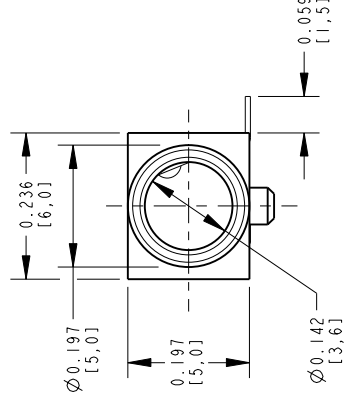


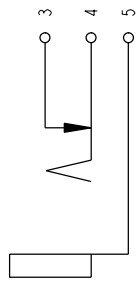
25-07073

NOTES:

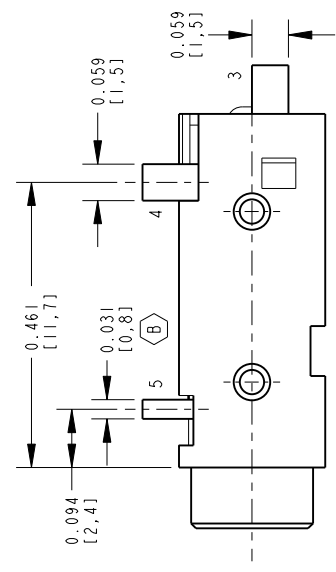
1. ALL DIMENSIONS ARE REFERENCE.
2. MATERIALS:
HOUSING: THERMOPLASTIC, BLACK
TERMINALS: COPPER ALLOY, GOLD PLATED
3. SUPPLIED ON TAPE AND REEL, SEE SHEET 2.
4. THIS PRODUCT IS RoHS COMPLIANT.



PCB LAYOUT
COMPONENT SIDE



SCHEMATIC



CUSTOMER DRAWING

★ STAR SYMBOL DENOTES CRITICAL DIMENSION		UNLESS OTHERWISE SPECIFIED	
1. ALL DIMENSIONS IN INCHES - TWO PLACE DECIMALS ±0.01 - THREE PLACE DECIMALS ±0.005 - ANGLES ±1° - ALL DIA. CONCENTRIC WITHIN 0.005 T. I. R.		2. FEATURES ON THE SAME CENTERLINE MUST BE ALIGNED WITHIN ±0.002	
3. REMOVE ALL BURRS			
REV	ECO NUMBER	DATE	BY / APVD
C	26972	6-20-12	TO TJK
B	26514	3-25-10	RS TJK
A	25182	1-13-06	JL GG
REVISIONS			
DO NOT SCALE DRAWING			
SIZE	WIDTH	MULT	LBS/M
FINISH	SCALE		TEMPER
SPEC No.	NONE		
DATE DRAWN	BY	CHKD	APVD
13-Jan-06	JL	GG	GG
NAME		PHONE	JACK
35RASM2AHNTRX		1-13-06	1-13-06
SURFACE MOUNT, RoHS			
PART No.		SHEET 1 OF 2	
35RASM2AHNTRX		REV C	

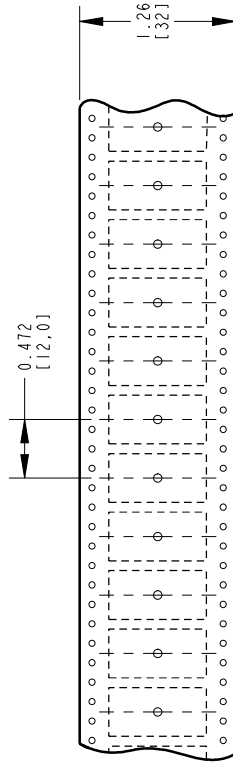
Pro/Engineer CAD File

B

Switchcraft®

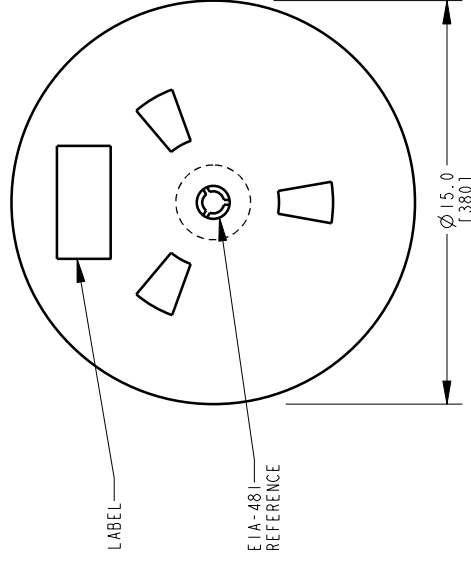
A: CARRIER SIZE

- 1. DETAIL SIZES REFERENCE: EIA-481
- 2. SPECIFICATION: 32 MM X 12 MM
- 3. COVER TAPE: SPECIFICATION ATTACHED (CONDUCTIVE)



B: REEL SIZE

- 1. QUANTITY: 1100 PCS/REEL B C
- 2. MATERIAL: THERMOPLASTIC



CUSTOMER DRAWING

SCALE	NONE
DATE DRAWN	13-Jan-06
DRAWN BY	JL

Switchcraft

SHEET	2	OF	2
PART No.	35RASMT2AHNTRX		
REV	C		

Mouser Electronics

Authorized Distributor

Click to View Pricing, Inventory, Delivery & Lifecycle Information:

[Switchcraft:](#)

[35RASMT2AHNTRX](#)