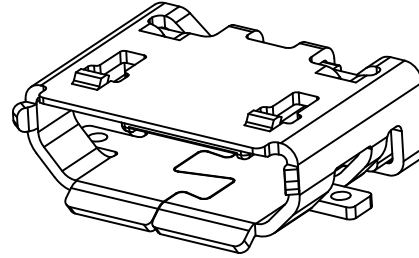
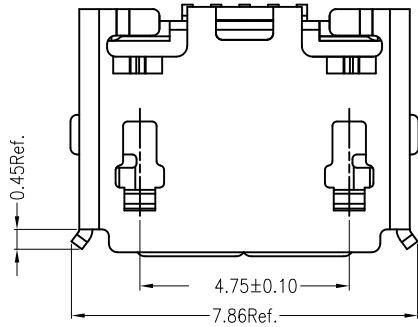


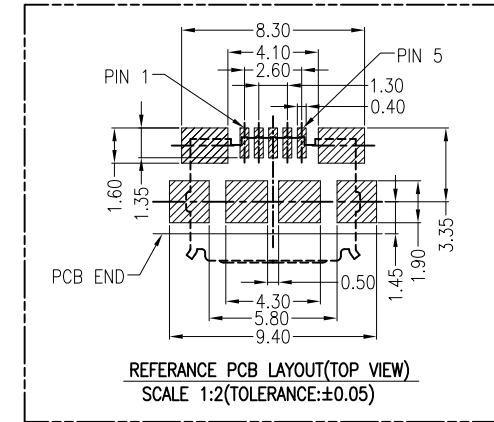
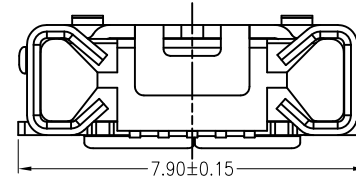
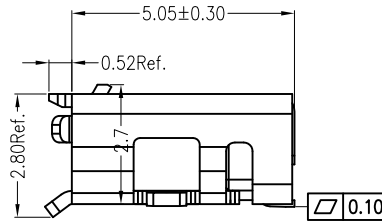
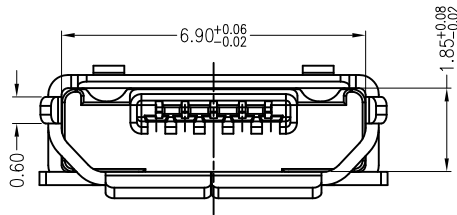
PART NUMBER
10118192-0001LF



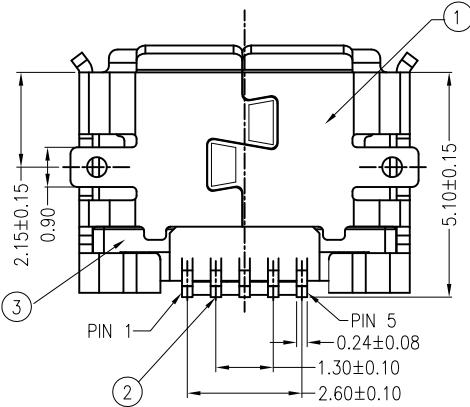
NOTES:

- MATERIAL:
HOUSING: HIGH THERMOPLASTIC RESIN, UL94V-0, COLOR: BLACK
TERMINAL: COPPER ALLOY
SHELL: STAINLESS
- FINISH:
CONTACT AREA: GOLD PLATED
CONTACT SOLDER AREA: GOLD FLASH
SHELL: MATTE TIN PLATED
UNDER NICKEL PLATED ALL OVER.
- PRODUCT SPECIFICATION: GS-12-641.
- PACKAGING SPECIFICATION: GS-14-2180.
- THE "LF" MEANS FOR LEAD FREE AND CAN WITHSTAND EXPOSE TO 260°C PEAK TEMPERATURE FOR 10 SECONDS IN IR REFLOW PROCESS.

A



A



B

Item	Title	Q'TY
1	Shell	1
2	Terminal	5
3	InsertMolding	1

mat'l. code		surface ASME Y14.5 ✓		tolerance ASME Y14.5		projection MM		product family USB	
ltr		ecn no		dr		date		title	
A		LS		10/21/11		tolerances unless otherwise specified		MICRO USB B TYPE RECEPTACLE	
				angles		.X±0.38		dwg no	
				X°±2°		.XX±0.25		sheet 1 of 1	
				dr		.XXX±0.10		size	
				JASON HSU		05/21/11		A4	
				enr		05/21/11		10118192	
				chr		05/21/11		type	
				appd		GARY HSIEH		CUSTOMER Drawing	
sheet index		revision sheet		A		1			