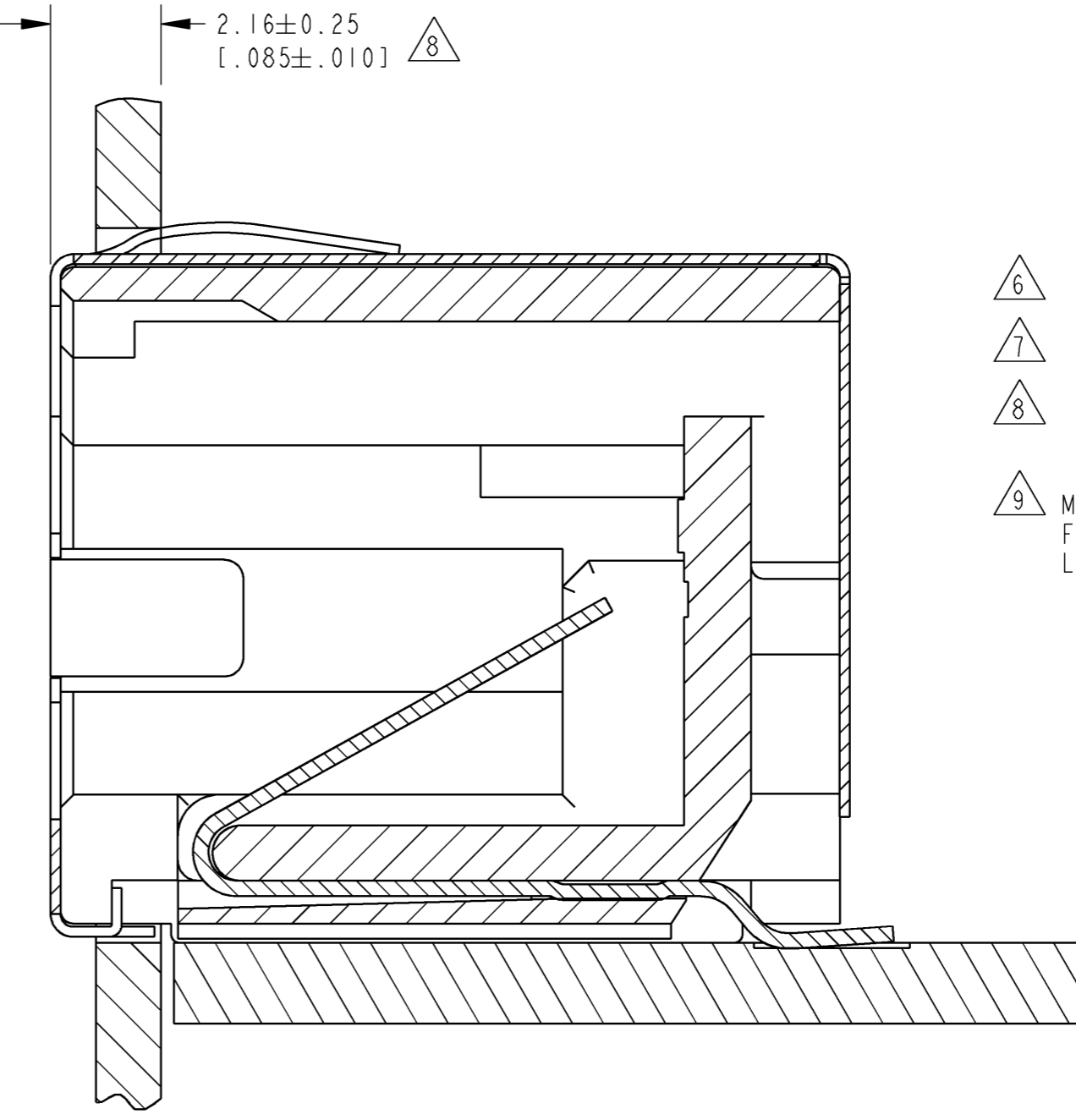
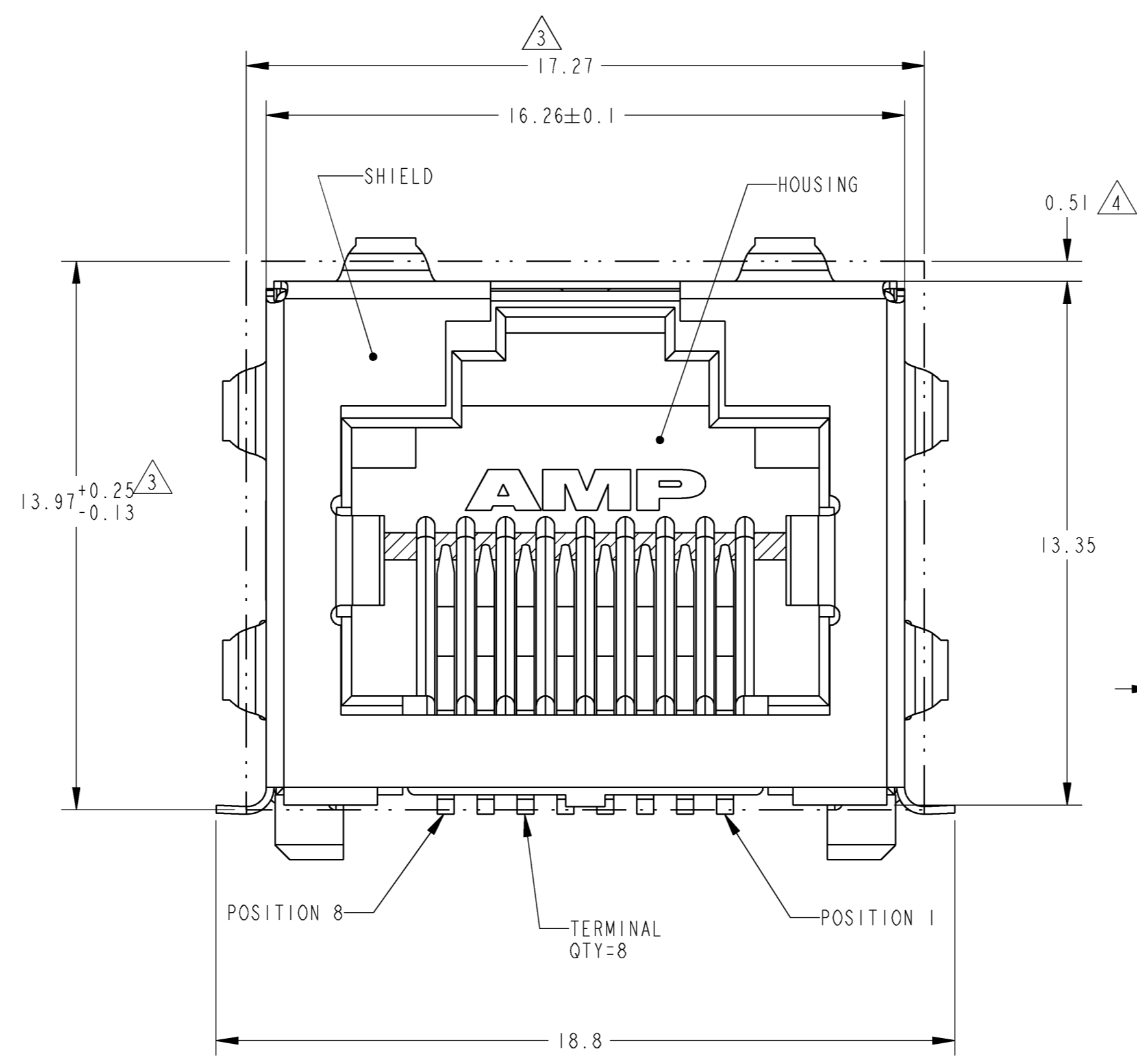
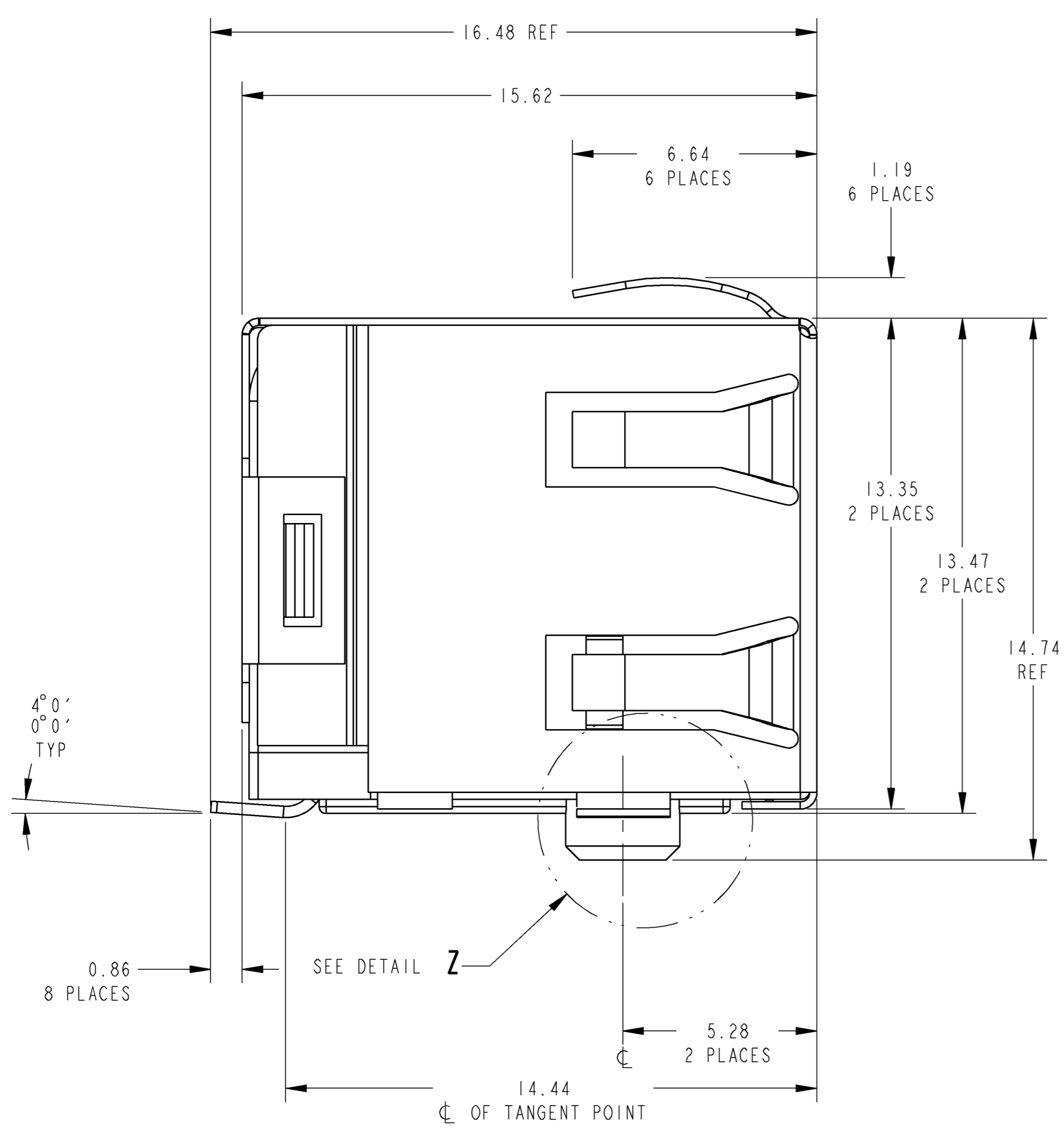
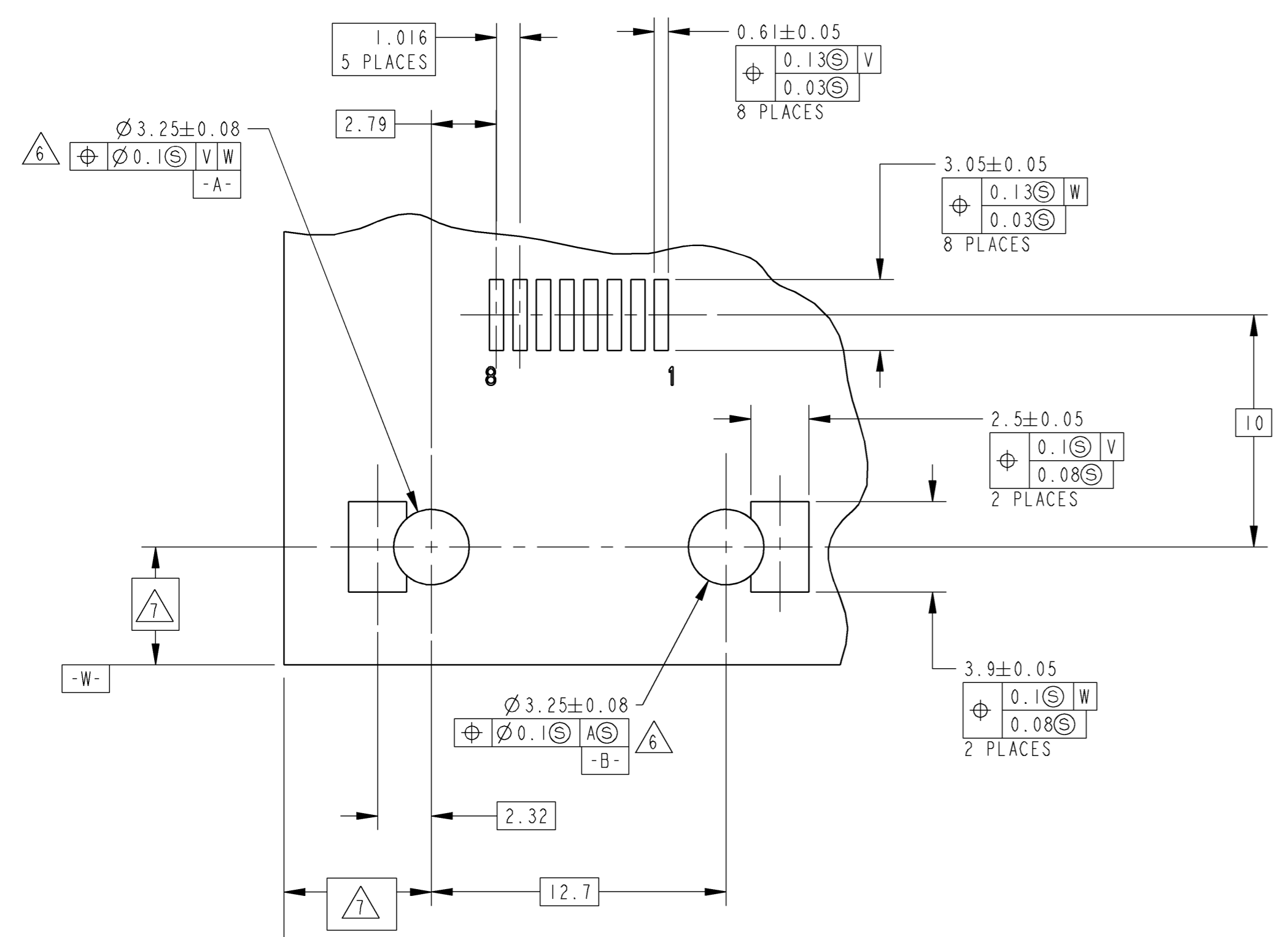
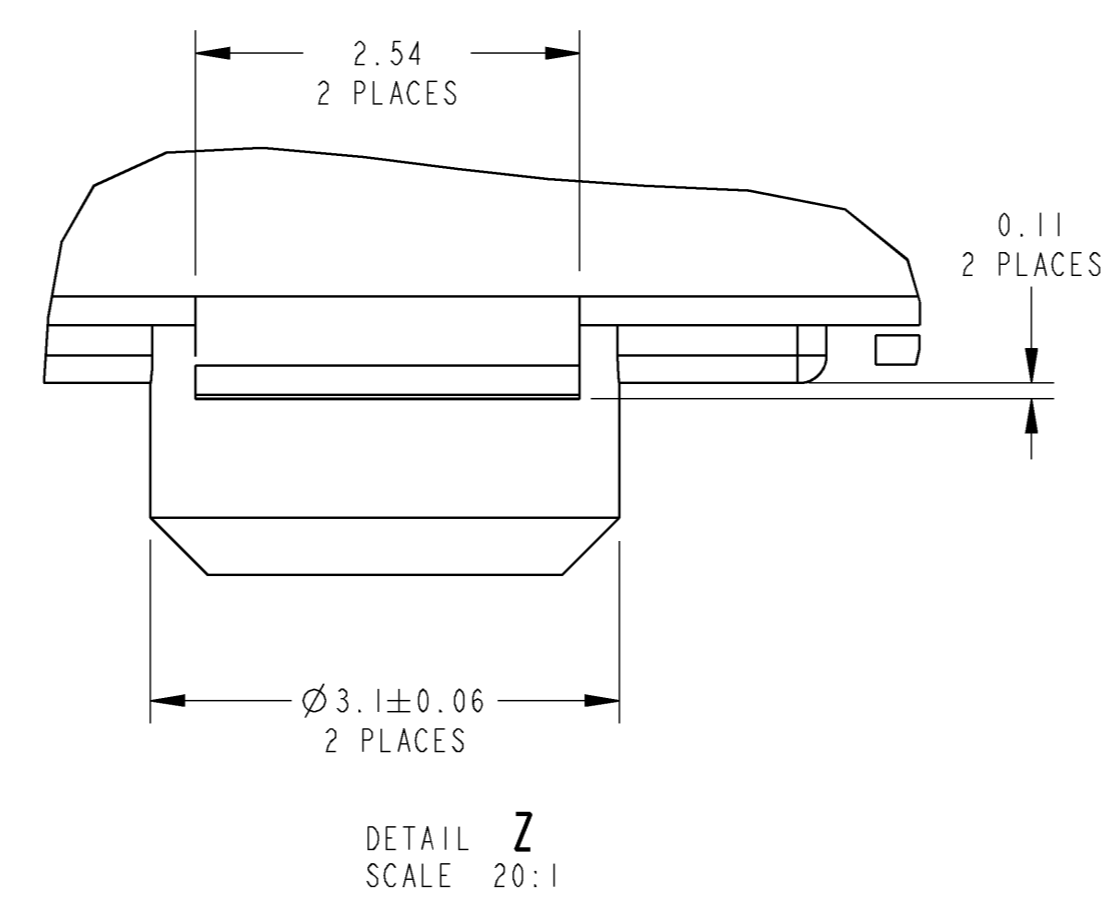


25-06091

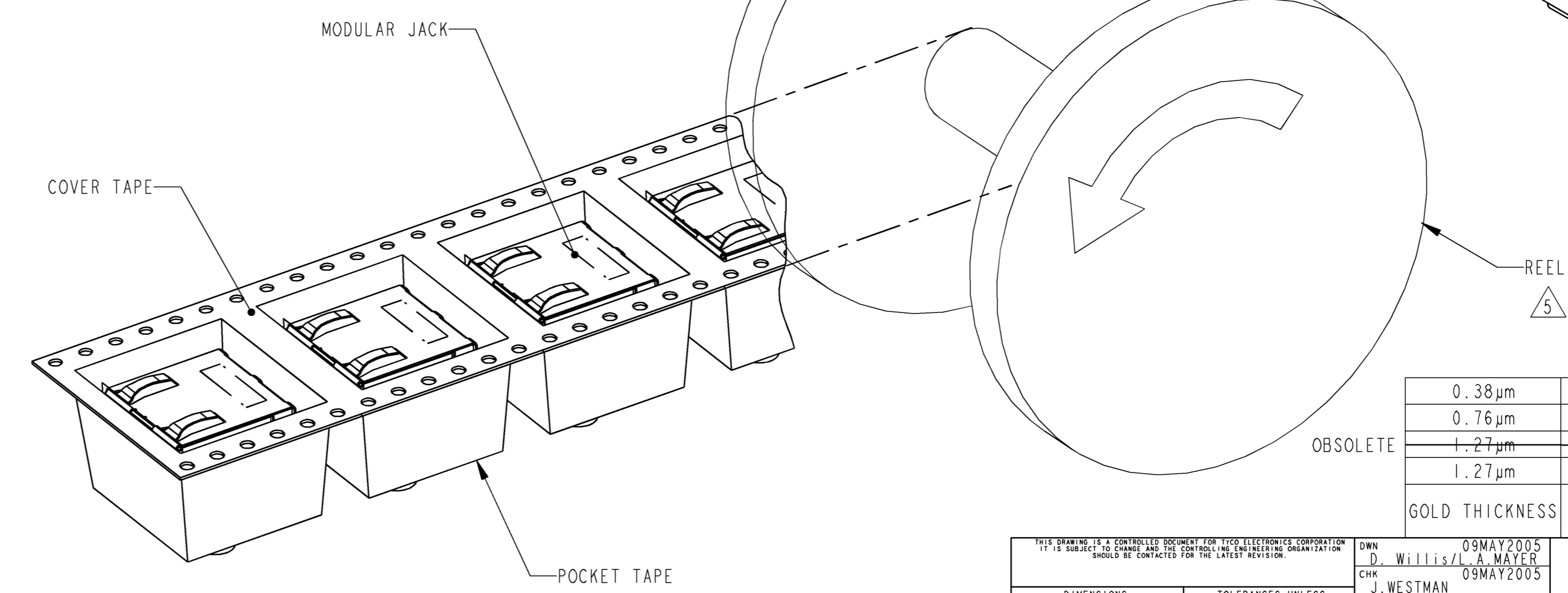
LOC	DIST	REVISIONS					
AA	00	P	LTH	DESCRIPTION	DATE	DWN	APVD
		A		ECO11-0201-04	09MAY2005	LAM	SF
		B		ECO-07-010288	07MAY2007	LAM	PR
		C		ECO-07-023527	12OCT2007	LAM	PR
		C1		ECR-10-011831	03JUN2010	PS	PKS



- MATERIAL:
 HOUSING - HIGH TEMP. THERMOPLASTIC, COLOR: SEE TABLE, UL94V-0.
 TERMINALS - 0.30 THICK PHOS BRONZE PLATED WITH 2.03µm MIN THICK MATTE TIN IN SOLDER AREA.
 GOLD (SEE TABLE) IN LOCALIZED PLATE AREA OVER 1.27µm MIN THICK NICKEL.
 SHIELD - (SEE TABLE) 0.196 THK BRASS PREPLATED WITH 2.03µm-3.81µm THICK MATTE TIN OVER 0.76µm-2.03µm NICKEL UNDERPLATE, OR 0.76-2.03µm NICKEL WITH SELECTIVE TIN PLATED SOLDER TABS.
 - JACK CAVITY CONFORMS TO FCC RULES AND REGULATIONS PART 68, SUBPART F.
- 3 SUGGESTED PANEL OPENING DIMENSIONS. SEE APPLICATION SPEC. 114-2154 FOR PANEL THICKNESS AND POSITION RECOMMENDATIONS
- 4 SUGGESTED CLEARANCE BETWEEN TOP OF CONNECTOR AND TOP PANEL OPENING
- 5 PACKAGED: POCKET TAPE & REEL (PER EIA 481 SPECIFICATIONS)
- POCKET TAPE WIDTH - 44mm
 POCKET PITCH - 24mm
 POCKET DEPTH - 16.7mm
- CLEAR COVER TAPE, PSA
 CLEAR COVER TAPE TRAILER - 1220mm, WRAPPED ON REEL HUB
- PLASTIC REEL - 381mm DIAMETER
- PRODUCT QUANTITY - 200 PIECES PER REEL
- 6 ZERO INSERTION FORCE POST WITH RECOMMENDED PCB LAYOUT
- 7 DATUM ESTABLISHED BY CUSTOMER.
- 8 CONNECTOR SHOULD BE POSITIONED THRU PANEL CUTOUT AS SHOWN TO SUPPORT TOP OF MODULAR JACK FOR STRAIN RELIEF.
- 9 MANUFACTURING DATE CODE LOCATED APPROXIMATELY AS SHOWN. FIRST 2 DIGITS ARE YEAR, SECOND 2 DIGITS ARE WORK WEEK, LAST DIGIT IS THE DAY OF THE WEEK



SUGGESTED PCB LAYOUT (COMPONENT SIDE)



GOLD THICKNESS	SHIELD PLATING	HOUSING COLOR	PART NUMBER
0.38µm	MATTE TIN	YELLOW	6339160-4
0.76µm	MATTE TIN	YELLOW	6339160-3
1.27µm	NICKEL	BLACK	6339160-2
1.27µm	MATTE TIN	BLACK	6339160-1

THIS DRAWING IS UNPUBLISHED. RELEASED FOR PUBLICATION. THIS DRAWING IS UNPUBLISHED. RELEASED FOR PUBLICATION. THIS DRAWING IS UNPUBLISHED. RELEASED FOR PUBLICATION.

DIMENSIONS:	TOLERANCES UNLESS OTHERWISE SPECIFIED:	DWN	09MAY2005	Tyco Electronics
mm	0 PLC ±	D. WILLIS	09MAY2005	Harrisburg, PA 17105-3608
	1 PLC ±0.25	CHEF J. WESTMAN	09MAY2005	
	3 PLC ±	APVD S. FELICKINGER	09MAY2005	
	4 PLC ±	NAME		
	ANGLES	PRODUCT SPEC		
	FINISH	108-1163-7		
MATERIAL	SEE NOTE 1	APPLICATION SPEC		
		114-6040/114-2154		
		SIZE	CAGE CODE	DRAWING NO
		114-6040/114-2154	A1	00779
		WEIGHT		6339160
		CUSTOMER DRAWING		

INVERTED MOD JACK ASSEMBLY, 1X1, SHIELDED SURFACE MOUNT, 8 POSITION RJ45

SCALE 8:1 SHEET 1 OF 1 REV C1