

(2,54mm) .100"

SSW, SSQ SERIES

THROUGH-HOLE .025" SQ POST SOCKET

SPECIFICATIONS

For complete specifications see www.samtec.com?SSW or www.samtec.com?SSQ

Insulator Material:

Black Liquid Crystal Polymer (-S & -D) or Black High Temperature Thermoplastic (-T)

Contact Material:

Phosphor Bronze

Plating:

Au or Sn over

50µ" (1.27µm) Ni

Operating Temp Range:

-55°C to +125°C with Gold

-55°C to +105°C with Tin

Contact Resistance:

10 mΩ max

Insertion Depth:

(3,68mm) .145" to

(6,35mm) .250"

Insertion Force:

(Single contact only)

(-S plating)

Standard= 6oz (1,67N) avg

(0,64mm) .025" SQ pin);

SSW Low Insertion Force=

3oz (0,83N) avg

SSQ Low Insertion Force=

3.3oz (0,92N) avg

Normal Force:

Standard= 125grams (4.4N)

Withdrawal Force:

(Single contact only)

(-S plating)

Standard= 5oz (1,39N) avg

(0,64mm) .025" SQ pin);

SSW Low Insertion Force=

2.6oz (0,72N) avg

SSQ Low Insertion Force=

2.9oz (0,81N) avg

Max Cycles:

100 with 10µ" (0,25µm) Au

Voltage Rating:

550 VAC mated with TSW

RoHS Compliant:

Yes

Lead-Free Solderable:

Yes



Mates With:
TSW, MTSW, MTLW,
LCW, EW, ZW, TSS,
ZSS, TSM, TSSH, HTSS



TYPE STRIP

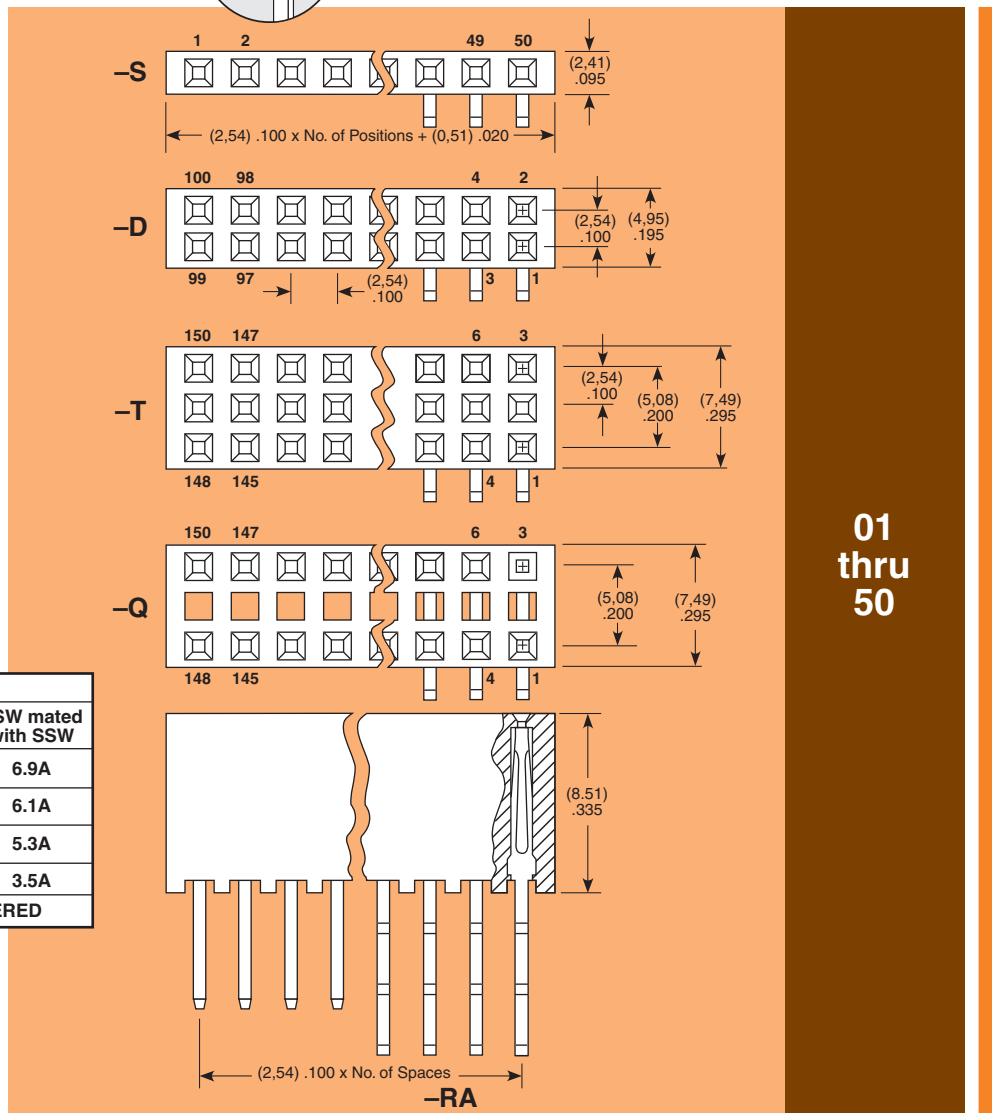
SSW = Solder Tail

SSQ = Square Tail

PIN CENTERS

-1 = (2,54mm) .100" Centers

NO. PINS PER ROW



01 thru 50

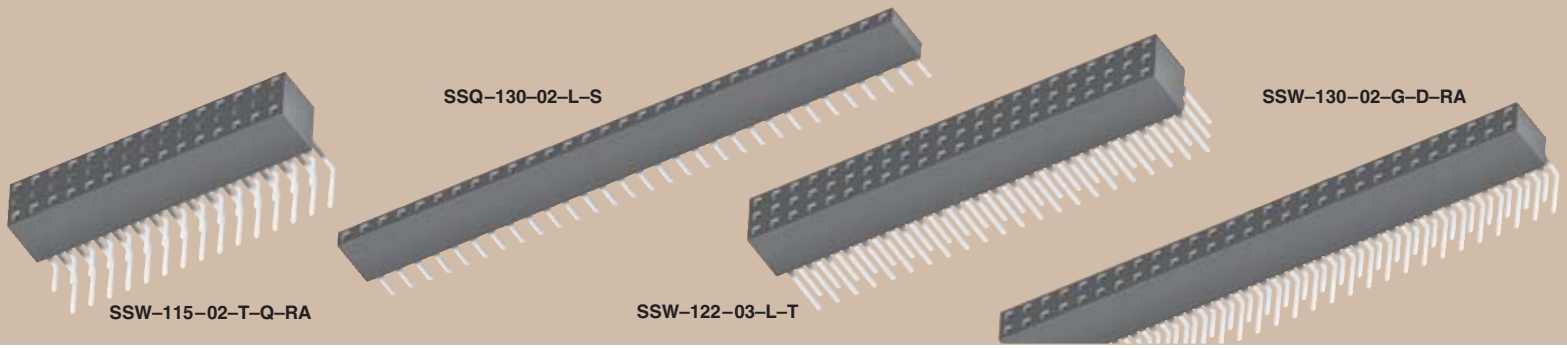
CURRENT RATING		
AMBIENT TEMP	TSW mated with SSQ	TSW mated with SSW
20°C	7.6A	6.9A
40°C	6.9A	6.1A
60°C	5.9A	5.3A
95°C	3.9A	3.5A

6 POSITIONS (2x3) POWERED

Note:
Some lengths, styles and options are non-standard, non-returnable.

Due to technical progress, all designs, specifications and components are subject to change without notice.

WWW.SAMTEC.COM



LEAD STYLE

PLATING OPTION

ROW OPTION

TAIL OPTION

OTHER OPTION

-F

= Gold flash on contact, Matte Tin on tail

-L

= 10 μ " (0,25 μ) Gold on contact, Matte Tin on tail

-G

= 20 μ " (0,51 μ) Gold on contact, Gold flash on tail

-T

= Matte Tin (-T N/A on LIF contacts)

Note: Other Gold plating options available. Contact Samtec.

-S

= Single Row

-P

= Single Row (Notched to mate with LCW) 36 pins max

-D

= Double Row

-T

= Triple Row

-Q

= Double Row .200" (5,08mm) row space (Outer rows filled only)

-RA

= Right Angle (Leave blank for straight pin version)

-N

= Notch (5, 7, 8, 10, 12, 13, 15, 17, 20, 25, 32 & 36 positions only) (-D & SSW only) (Mates to TSS, ZSS and HTSS only)

-LL

= Locking Lead

Two leads per strip crimped in opposite directions on or near centerline. Available on tails from (2,29mm) .090" to (7,87mm) .310" only. N/A with single row 1 or 2 positions.

-“XXX”

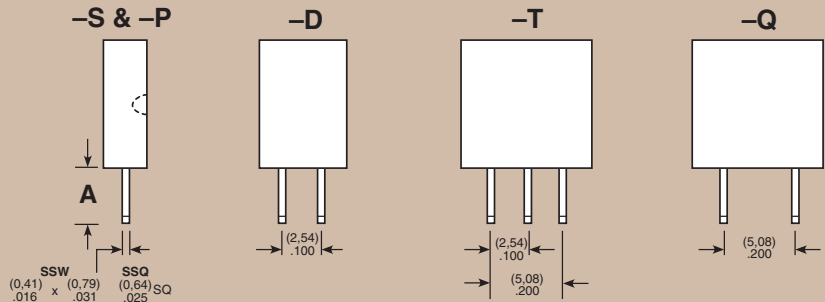
= Polarized (Specify “XXX” as position number)

Straight Pin Versions (Specify “LEAD STYLE” from chart)

LEAD STYLE		SINGLE DOUBLE OR TRIPLE A
Standard Insertion Force	Low Insertion Force*	
-01	-21	(2,64) .104
-02	-22	(4,93) .194
-03	-23	(10,00) .394
-04	-24	(14,83) .584
-06**	N/A	(3,15) .124

* LIF N/A with Tin Plating

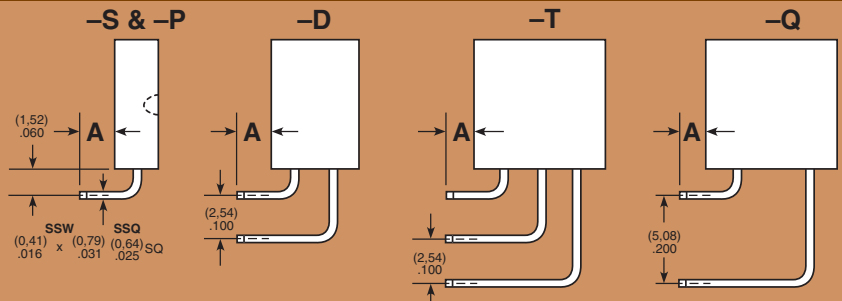
**Style -06 N/A with SSW



Right Angle Versions (Specify “LEAD STYLE” from chart)

LEAD STYLE		SINGLE	DOUBLE	TRIPLE
Standard Insertion Force	Low Insertion Force*	(-S & -P) A	(-D) A	(-T & -Q) A
-02	-22	(2,54) .100	(2,54) .100	(2,54) .100
-03	-23	(7,62) .300	(7,62) .300	N/A
-04	-24	(12,45) .490	N/A	N/A

*LIF N/A with Tin Plating



Due to technical progress, all designs, specifications and components are subject to change without notice.

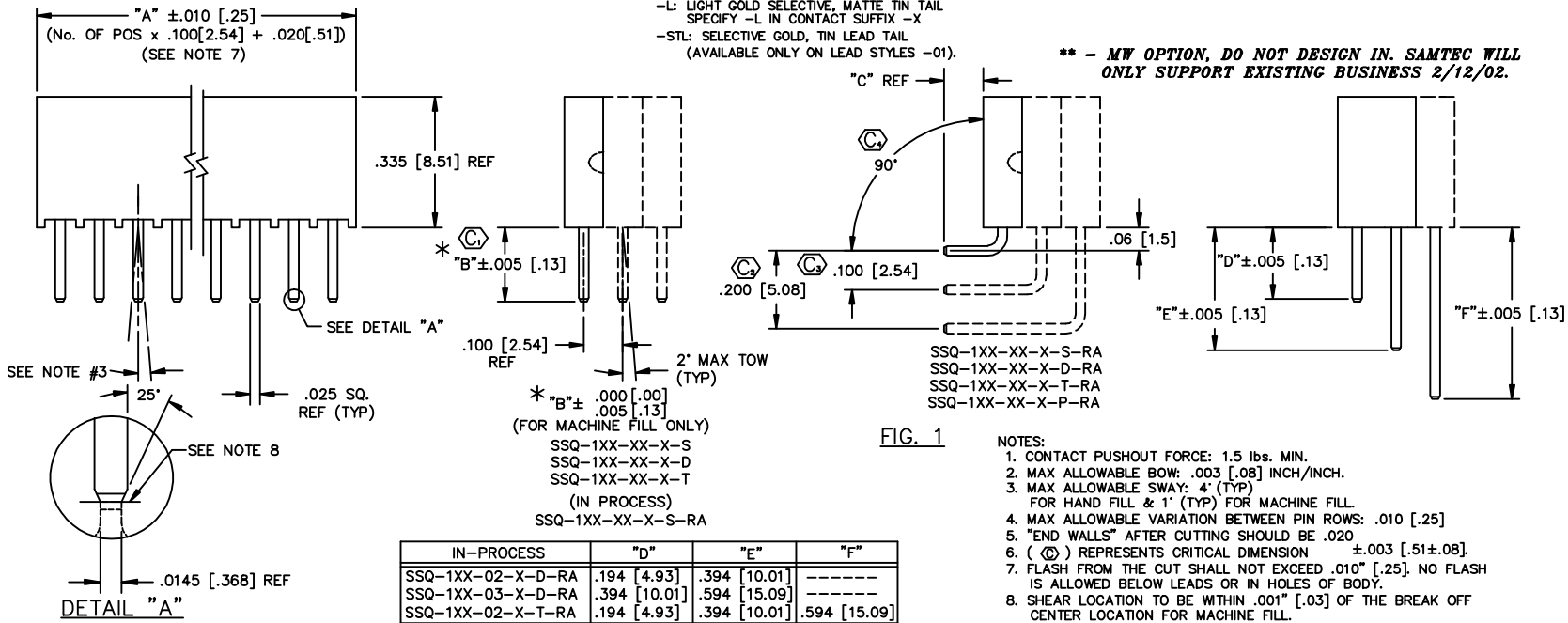
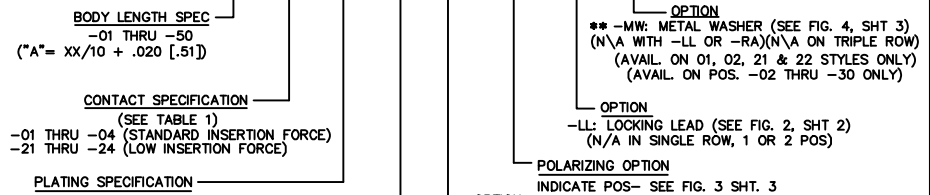
WWW.SAMTEC.COM

DO NOT SCALE FROM THIS PRINT

TABLE 1
CONTACT SPECIFICATION

	-S, -D, -T	-S-RA	-D-RA	-T-RA
-01	C-15-1-X	N/A	N/A	N/A
-02	C-15-2-X	C-15-2-X	C-15-2-X	C-15-2-X
			C-15-3-X	C-15-3-X
			C-15-4-X	N/A
-03	C-15-3-X	C-15-3-X	C-15-3-X	N/A
			C-15-4-X	N/A
-04	C-15-4-X	C-15-4-X	N/A	N/A
-21	C-60-1-X	N/A	N/A	N/A
-22	C-60-2-X	C-60-2-X	C-60-2-X	C-60-2-X
			C-60-3-X	C-60-3-X
			C-60-4-X	C-60-4-X
-23	C-60-3-X	C-60-3-X	C-60-3-X	N/A
			C-60-4-X	N/A
-24	C-60-4-X	C-60-4-X	N/A	N/A

SSQ-1XX-XX-XXX-X-XX-XXX-XX-XX



- NOTES:
- CONTACT PUSHOUT FORCE: 1.5 lbs. MIN.
 - MAX ALLOWABLE BOW: .003 [.08] INCH/INCH.
 - MAX ALLOWABLE SWAY: 4' (TYP) FOR HAND FILL & 1' (TYP) FOR MACHINE FILL.
 - MAX ALLOWABLE VARIATION BETWEEN PIN ROWS: .010 [.25]
 - "END WALLS" AFTER CUTTING SHOULD BE .020
 - (⊙) REPRESENTS CRITICAL DIMENSION ±.003 [.51±.08]
 - FLASH FROM THE CUT SHALL NOT EXCEED .010" [.25]. NO FLASH IS ALLOWED BELOW LEADS OR IN HOLES OF BODY.
 - SHEAR LOCATION TO BE WITHIN .001" [.03] OF THE BREAK OFF CENTER LOCATION FOR MACHINE FILL.
 - NOTCH ON -P-RA OPTION TO BE ORIENTED AS SHOWN.

TABLE 2

CONTACT	"B"	"C" REF		
	-S(-RA), -D, -T	-S-RA	-D-RA	-T-RA
-01, -21	.104 [2.64]	N/A	N/A	N/A
-02, -22	.194 [4.93]	.100 [2.54]	.100 [2.54]	.100 [2.54]
-03, -23	.394 [10.01]	.300 [7.62]	.300 [7.62]	N/A
-04, -24	.584 [14.83]	.490 [12.45]	N/A	N/A

PROPRIETARY NOTE
THIS DOCUMENT CONTAINS INFORMATION CONFIDENTIAL AND PROPRIETARY TO SAMTEC INC. AND SHALL NOT BE REPRODUCED OR TRANSMITTED IN ANY FORM OR BY ANY MEANS, ELECTRONIC OR MECHANICAL, INCLUDING PHOTOCOPYING, RECORDING, OR BY ANY INFORMATION STORAGE AND RETRIEVAL SYSTEM, WITHOUT THE EXPRESS WRITTEN CONSENT OF SAMTEC INC.

MATERIAL:
INSULATOR:
PRIMARY MATERIAL: LCP
COLOR: BLACK

TERMINAL:
PHOSPHOR BRONZE

EXISPROD\ASSEMBLY\100
SSQ-ASM

samtec

520 PARK EAST BLVD. NEW ALBANY, INDIANA 47150
PHONE (812) 944-6733 P.O. BOX 1147
CODE 55322

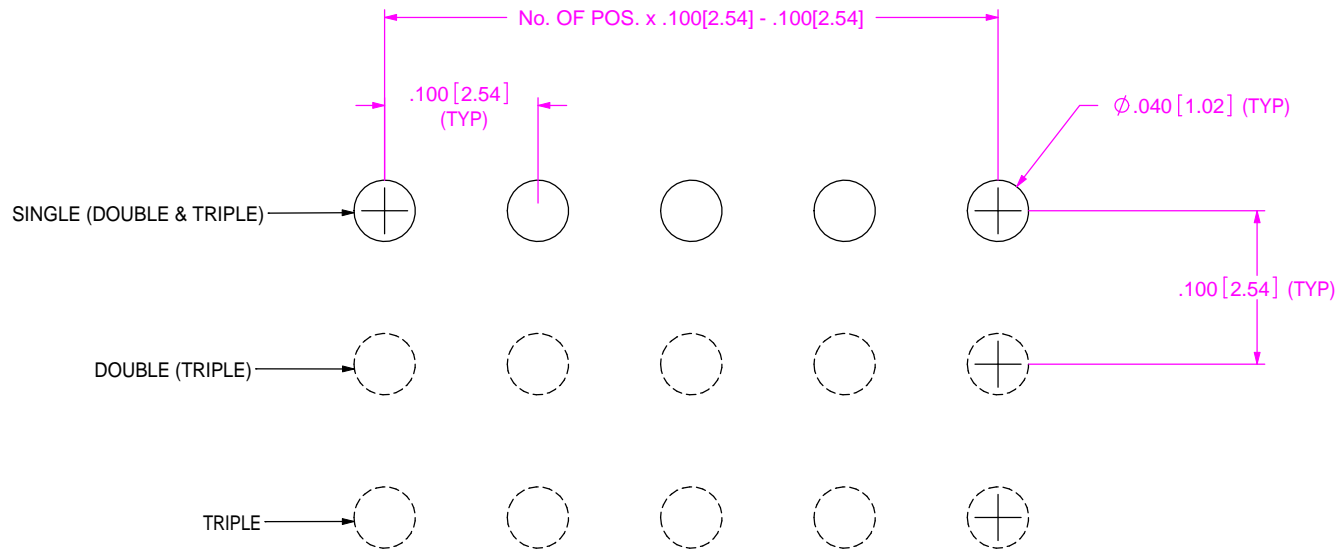


FIG. 1
SSQ-1XX-XX-XX-X SHOWN

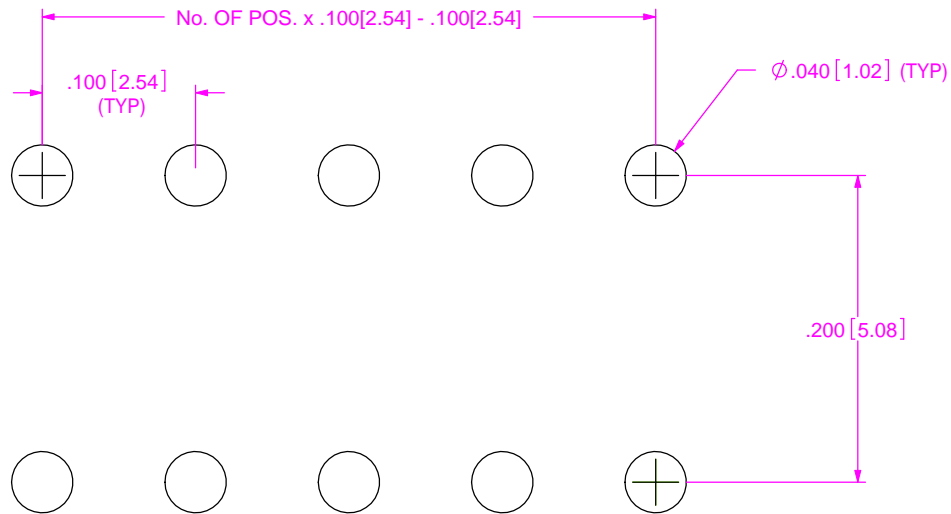


FIG. 2
SSQ-1XX-XX-XX-Q SHOWN

PROPRIETARY NOTE
THIS DOCUMENT CONTAINS INFORMATION CONFIDENTIAL AND PROPRIETARY TO SAMTEC, INC. AND SHALL NOT BE REPRODUCED OR TRANSFERRED TO OTHER DOCUMENTS OR DISCLOSED TO OTHERS OR USED FOR ANY PURPOSE OTHER THAN THAT WHICH IT WAS OBTAINED WITHOUT THE EXPRESSED WRITTEN CONSENT OF SAMTEC, INC.



RECOMMENDED PCB LAYOUT FOR SSQ-1XX-XX-XX-X-XX-XXX-XX-XX

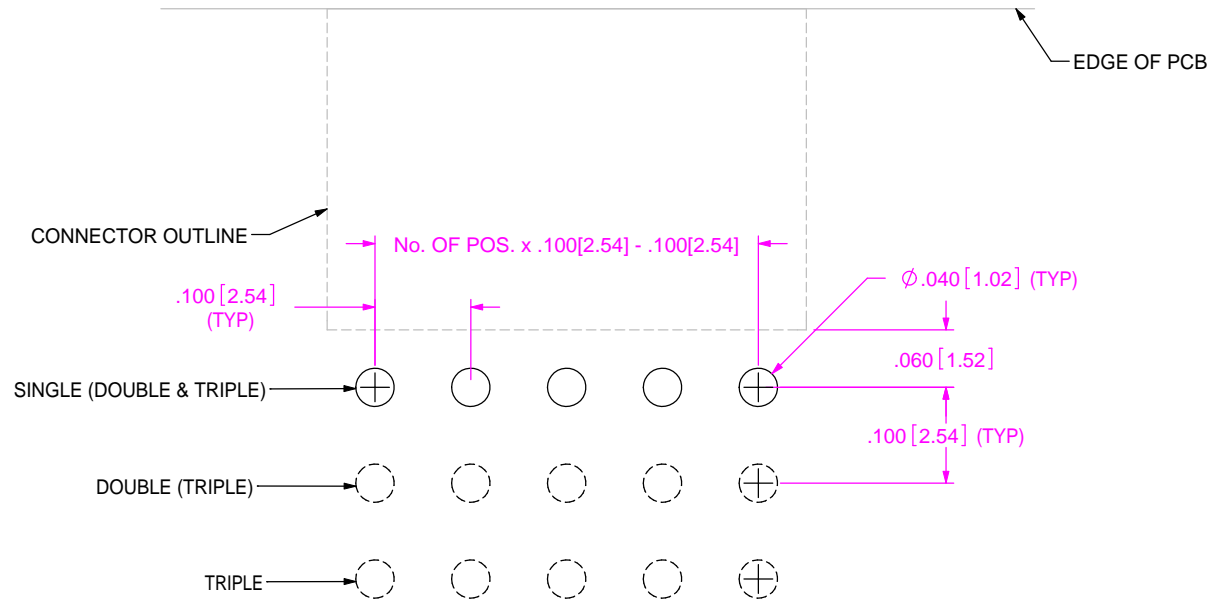


FIG. 3
SSQ-1XX-XX-XX-X-RA SHOWN

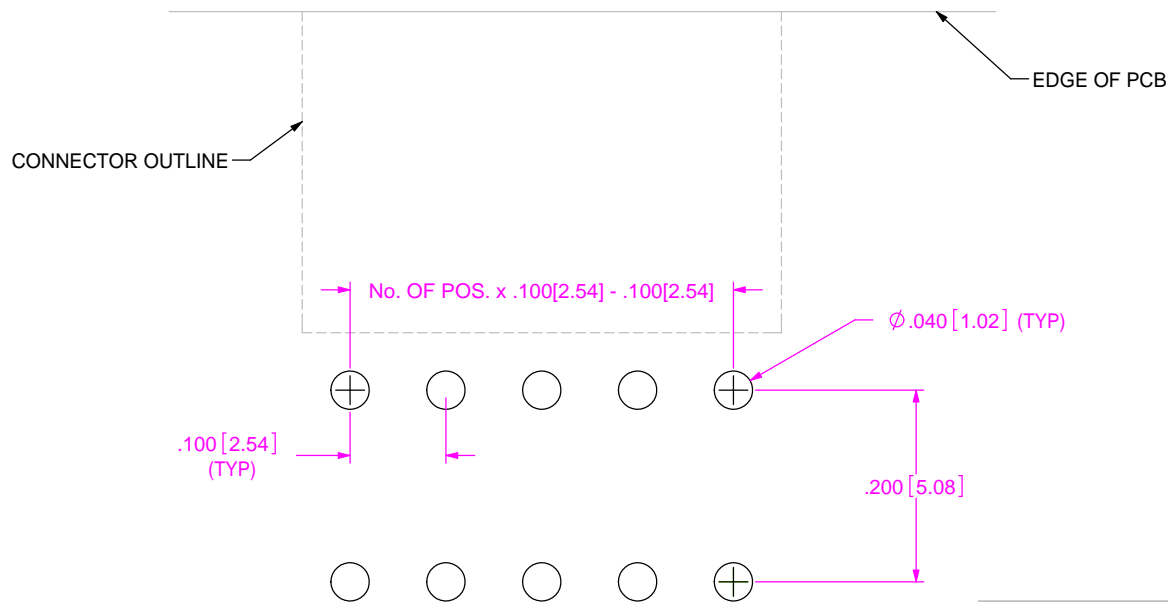


FIG. 4
SSQ-1XX-XX-XX-Q-RA SHOWN

F:\dwg\MISC\Mktg\Footprint\SSQ-1XX-XX-XX-X-XX-XXX-XX-XX-FOOTPRINT.SLDDRW

PROPRIETARY NOTE
THIS DOCUMENT CONTAINS INFORMATION CONFIDENTIAL AND PROPRIETARY TO SAMTEC, INC. AND SHALL NOT BE REPRODUCED OR TRANSFERRED TO OTHER DOCUMENTS OR DISCLOSED TO OTHERS OR USED FOR ANY PURPOSE OTHER THAN THAT WHICH IT WAS OBTAINED WITHOUT THE EXPRESSED WRITTEN CONSENT OF SAMTEC, INC.



520 PARK EAST BLVD, NEW ALBANY, IN 47150
PHONE: 812-944-6733 FAX: 812-948-5047
e-Mail info@SAMTEC.com code 55322