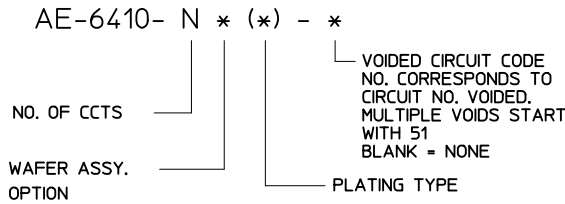
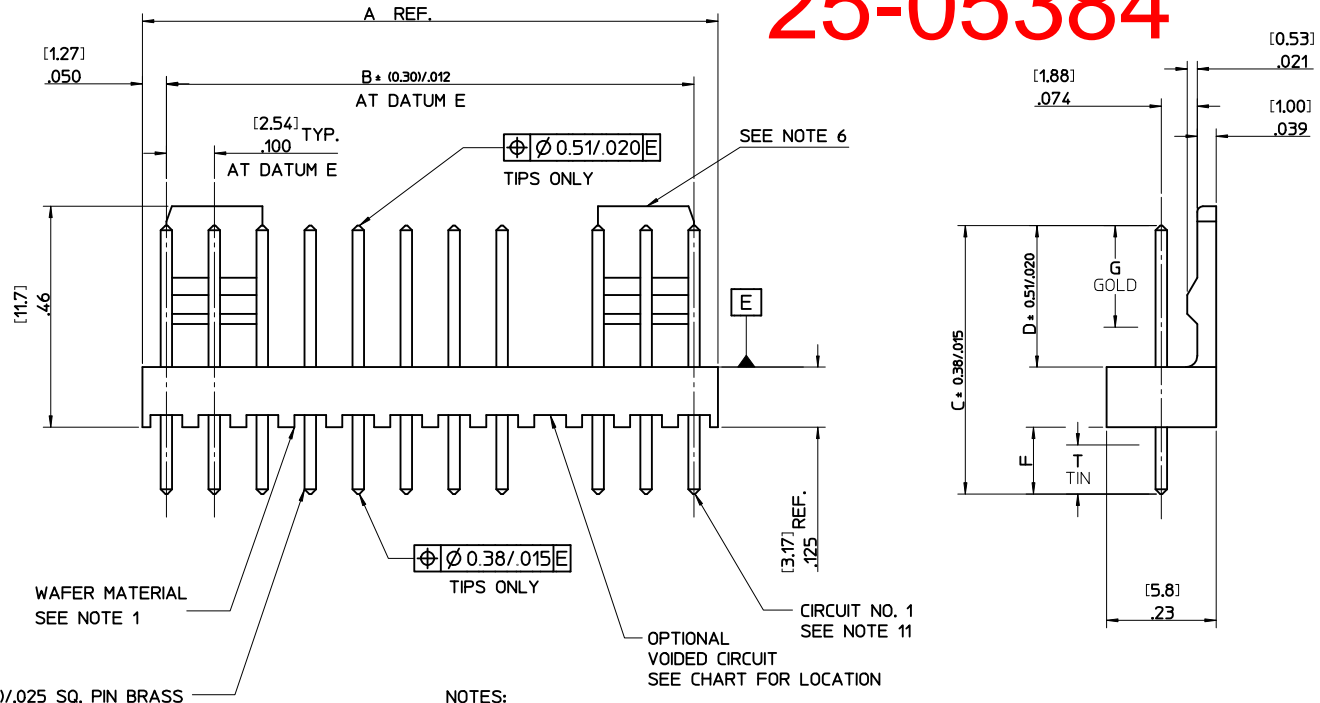
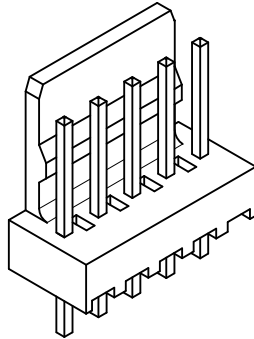
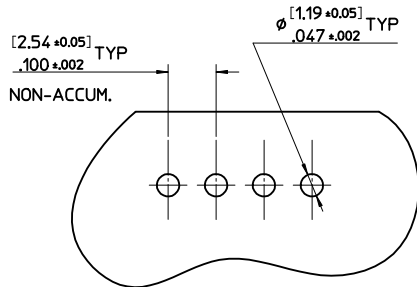


25-05384

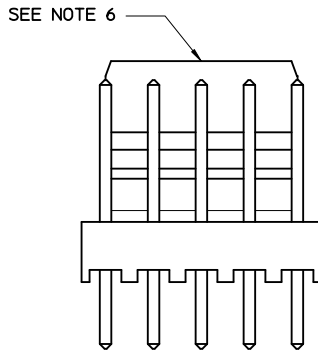
NO. OF CCTS	DIMN. "A"	DIMN. "B"
2	(5.08) .200	(2.54) .100
3	(7.62) .300	(5.08) .200
4	(10.16) .400	(7.62) .300
5	(12.70) .500	(10.16) .400
6	(15.24) .600	(12.70) .500
7	(17.78) .700	(15.24) .600
8	(20.32) .800	(17.78) .700
9	(22.86) .900	(20.32) .800
10	(25.40) 1.000	(22.86) .900
11	(27.94) 1.100	(25.40) 1.000
12	(30.48) 1.200	(27.94) 1.100
13	(33.02) 1.300	(30.48) 1.200
14	(35.56) 1.400	(33.02) 1.300
15	(38.10) 1.500	(35.56) 1.400
16	(40.64) 1.600	(38.10) 1.500



- NOTES:**
- WAFER MATERIAL: NYLON, UL94V-0. PIN MATERIAL: BRASS
 - FINISH:
 154 = OVERALL TIN: 0.00254/.00100 MIN. OVER 0.00127/.000050 MIN. NICKEL
 197 = OVERALL REFLOWED MATTE TIN: 0.00152/.00060 MIN. OVER 0.00127/.000050 MIN. NICKEL
 222 = OVERALL MATTE TIN: 0.00254/.00100 MIN. OVER 0.00127/.000050 MIN NICKEL
 228 = SELECT GOLD 0.00076/.000030 MIN., SELECT MATTE TIN: 0.00254/.00100 OVER 0.00127/.000050 MIN NICKEL
 231 = SELECT GOLD 0.00127/.000050 MIN., SELECT MATTE TIN: 0.00254/.00100 OVER 0.00076/.000030 MIN NICKEL
 241 = SELECT GOLD 0.00051/.000020 MIN., SELECT MATTE TIN: 0.00254/.00100 OVER 0.00076/.000030 MIN NICKEL
 - THIS PART CONFORMS TO MOLEX PROD. SPEC. PS-99020-0088.
 - PACKAGING: PER PK-6410-002
 - PIN SOLDERABILITY PER MOLEX SPEC. SMES-152.
 - SINGLE RAMP ON 2-6 CCTS TWO RAMP ON 7-16 CCTS, AS SHOWN.
 - PIN PUSH OUT FORCE: (0.907 Kg)/2lbs MIN.
 - PCB THICKNESS 1.6MM
 - WAFERS STACKABLE END TO END WITH (2.54)/.100 BETWEEN END PINS
 - THIS PART CONFORMS TO CLASS B REQUIREMENTS OF COSMETIC SPECIFICATION PS-45499-002.
 - CIRCUIT 1 DESIGNATION IS USED TO DEFINE VOID LOCATION. CIRCUIT 1 MAY OR MAY NOT LINE UP WITH CIRCUIT 1 ON THE MATING HOUSING.

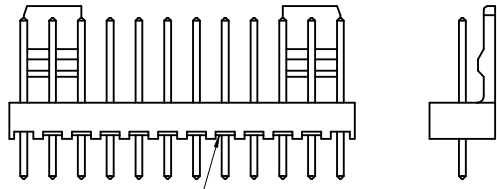


RECOMMENDED P.C.B. HOLE DIMENSIONS (STANDARD SERIES)



CHANGE PLATING EC NO: UCP2012-1821 DRW:WSTROH 2011/12/22 CHK:HKIPPER 2012/01/03 APPR:FSMITH 2012/02/02	QUALITY SYMBOLS ▽=0 ▽=0 ▽=0	GENERAL TOLERANCES (UNLESS SPECIFIED)		DIMENSION STYLE		SCALE	DESIGN UNITS	THIRD ANGLE PROJECTION	
		mm	INCH	MM/IN		5:1	METRIC		
REV: BC	DESCRIPTION	4 PLACES	± ---	± ---	DRAWN BY	DATE	WAFER, FRICTION LOCK KK (2.54)/.100 FOR (0.64)/.025 SQ. PINS		
		3 PLACES	± ---	± .010	T. MAHON	28/01/03			
		2 PLACES	± 0.25	± .014	CHECKED BY	DATE	MOLEX INCORPORATED		
1 PLACE	± 0.35	± ---	BMAGUIRE	28/01/03					
ANGULAR ± .5 °		APPROVED BY		DATE	SDAE-6410-N			SHEET NO. 1 OF 4	
DRAFT WHERE APPLICABLE MUST REMAIN WITHIN DIMENSIONS		SEE CHART		JDENNEHY		2005/03/11		THIS DRAWING CONTAINS INFORMATION THAT IS PROPRIETARY TO MOLEX INCORPORATED AND SHOULD NOT BE USED WITHOUT WRITTEN PERMISSION	

ENG. NO.	AE-6410-NA (222)		AE-6410-NC (197)		AE-6410-NH (197)		AE-6410-NJ (197)		AE-6410-NL (154)		AE-6410-NM (154)		
DIMN. "D"	(7.50) .295		(7.14) .281		(7.49) .295		(18.80) .740		(8.58) .338		(7.62) .300		
DIMN. "C"	(14.22) / .560		(20.32) / .800		(14.98) / .590		(25.40) / 1.000		(23.88) / .940		(20.32) / .800		
DIMN. "F"	(3.56) / .140 REF		(10.00) / .394 REF		(4.32) / .170 REF		(3.43) / .135 REF		(12.13) / .477 REF		(9.53) / .375 REF		
DIMN. "G"	N/A		N/A		N/A		N/A		N/A		N/A		
DIMN. "T"	OVERALL		OVERALL		OVERALL		OVERALL		OVERALL		OVERALL		
PLATING	222		197		197		197		154		154		
NO. OF CIRCUITS	2	AE-6410-2A(222)	22-27-2021	AE-6410-2C(197)	38-00-6292	AE-6410-2H(197)	38-00-6754	AE-6410-2J(197)	NOT TOOLED	AE-6410-2L(154)	NOT TOOLED	AE-6410-2M(154)	NOT TOOLED
	3	3 A(222)	▲ 2031	3 C(197)	▲ 6293	3 H(197)	NOT TOOLED	3 J(102)	NOT TOOLED	3 L(154)	26-01-3195	3 M(154)	26-01-3179
	4	4 A(222)	2041	4 C(197)	6294	4 H(197)	22-27-2046	4 J(102)	NOT TOOLED	4 L(154)	NOT TOOLED	4 M(154)	NOT TOOLED
	5	5 A(222)	2051	5 C(197)	6295	5 H(197)	NOT TOOLED	5 J(102)	22-27-2057	5 L(154)	▲	5 M(154)	▲
	6	6 A(222)	2061	6 C(197)	6296	6 H(197)	▲	6 J(102)	NOT TOOLED	6 L(154)	▲	6 M(154)	▲
	7	7 A(222)	2071	7 C(197)	6297	7 H(197)	▲	7 J(102)	NOT TOOLED	7 L(154)	▲	7 M(154)	▲
	8	8 A(222)	2081	8 C(197)	6298	8 H(197)	▲	8 J(102)	22-27-2087	8 L(154)	▲	8 M(154)	▲
	9	9 A(222)	2091	9 C(197)	6299	9 H(197)	▲	9 J(102)	NOT TOOLED	9 L(154)	▲	9 M(154)	▲
	10	10 A(222)	2101	10 C(197)	6300	10 H(197)	▼	10 J(102)	▲	10 L(154)	▲	10 M(154)	▲
	11	11 A(222)	2111	11 C(197)	6301	11 H(197)	NOT TOOLED	11 J(102)	▲	11 L(154)	▲	11 M(154)	▲
	12	12 A(222)	2121	12 C(197)	6302	12 H(197)	22-27-2126	12 J(102)	▲	12 L(154)	▲	12 M(154)	▲
	13	13 A(222)	2131	13 C(197)	6303	13 H(197)	NOT TOOLED	13 J(102)	▲	13 L(154)	▼	13 M(154)	▲
	14	14 A(222)	2141	14 C(197)	6304	14 H(197)	▲	14 J(102)	▲	14 L(154)	NOT TOOLED	14 M(154)	▲
	15	15 A(222)	▼ 2151	15 C(197)	▼ 6305	15 H(197)	▼	15 J(102)	▼	15 L(154)	38-00-1736	15 M(154)	▼
	16	AE-6410-16A(222)	22-27-2161	AE-6410-16C(197)	38-00-6306	AE-6410-16H(197)	NOT TOOLED	AE-6410-16J(197)	NOT TOOLED	AE-6410-16L(154)	NOT TOOLED	AE-6410-16M(154)	NOT TOOLED



RIBS ADDED
(4-16 CCTS. ONLY)
ALTERNATIVE WAFER CONFIGURATION

SEE SHEET 1 EC NO: UCP2012-1821 DRWN:MWSTROH 2011/12/22 CHKD:HKIPPER 2012/01/03 APPR:FSMITH 2012/02/07	QUALITY SYMBOLS	GENERAL TOLERANCES (UNLESS SPECIFIED)	DIMENSION STYLE	SCALE	DESIGN UNITS	THIRD ANGLE PROJECTION
	▽=0	mm INCH	MM/IN	4:1	METRIC	
	▽=0	4 PLACES ± --- ± ---	DRAWN BY DATE	T. MAHON 28/01/03	WAFER, FRICTION LOCK KK (2.54)/.100 FOR (0.64)/.025 SQ. PINS	
	▽=0	3 PLACES ± --- ± .010	CHECKED BY DATE	BMAGUIRE 28/01/03	MOLEX INCORPORATED	
	2 PLACES ± 0.25 ± .014	APPROVED BY DATE	JDENNEHY 2005/03/11	MATERIAL NO.	DOCUMENT NO.	SHEET NO.
	1 PLACE ± 0.35 ± ---	ANGULAR ± .5 °		SEE CHART	SDAE-6410-N	2 OF 4
		DRAFT WHERE APPLICABLE MUST REMAIN WITHIN DIMENSIONS		THIS DRAWING CONTAINS INFORMATION THAT IS PROPRIETARY TO MOLEX INCORPORATED AND SHOULD NOT BE USED WITHOUT WRITTEN PERMISSION		

ENG. NO.	AE-6410-NA (241)	AE-6410-NC (241)	AE-6410-NA (231)	AE-6410-NS (241)	AE-6410-NA (228)						
DIMN. "D"	(7.50) .295	(7.14) .281	(7.50) .295	(7.50) .295	(7.50) .295						
DIMN. "C"	(14.22) / .560	(20.32) / .800	(14.22) / .560	(16.51) / .650	(14.22) / .560						
DIMN. "F"	(3.56) / .140 REF	(10.00) / .394 REF	(3.56) / .140 REF	(5.84) / .230 REF	(3.56) / .140 REF						
DIMN. "G"	(3.56)/.140	(5.08)/.200	(3.56)/.140	(5.08)/.200	(3.56)/.140						
DIMN. "T"	(3.43)/.135	(5.08)/.200	(3.43)/.135	(5.08)/.200	(3.43)/.135						
PLATING	241	241	231	241	228						
NO. OF CIRCUITS	2	AE-6410-2A(241)	22-29-2021	AE-6410-2C(241)	NOT TOOLED	AE-6410-2A(231)	38-00-7250	NOT TOOLED	AE-6410-2A(228)	38-00-7062	
	3	3 A(241)	↑ 2031	3 C(241)	38-00-5909	3 A(231)	NOT TOOLED	NOT TOOLED	3 A(228)	↑ 7063	
	4	4 A(241)	2041	4 C(241)	NOT TOOLED	4 A(231)	38-00-7251	AE-6410-4S(241)	38-00-7666	4 A	↑ 7064
	5	5 A(241)	2051	5 C(241)	↑	5 A(231)	NOT TOOLED	NOT TOOLED	5 A	7065	
	6	6 A(241)	2061	6 C(241)	↑	6 A(231)	↑	6 S(241)	38-00-7667	6 A	7066
	7	7 A(241)	2071	7 C(241)	↑	7 A(231)	↑	NOT TOOLED	NOT TOOLED	7 A	↓ 7067
	8	8 A(241)	2081	8 C(241)	↑	8 A(231)	↑	↑	8 A	38-00-7068	
	9	9 A(241)	2091	9 C(241)	↑	9 A(231)	↑	↑	9 A	NOT TOOLED	
	10	10 A(241)	2101	10 C(241)	↑	10 A(231)	↑	↑	10 A	NOT TOOLED	
	11	11 A(241)	2111	11 C(241)	↑	11 A(231)	↑	↑	11 A	NOT TOOLED	
	12	12 A(241)	2121	12 C(241)	↑	12 A(231)	↑	↑	12 A	38-00-7072	
	13	13 A(241)	2131	13 C(241)	↑	13 A(231)	↑	↑	13 A	NOT TOOLED	
	14	14 A(241)	2141	14 C(241)	↑	14 A(231)	↑	↑	14 A	38-00-7074	
	15	15 A(241)	2151	15 C(241)	↓	15 A(231)	↓	↓	15 A	NOT TOOLED	
	16	AE-6410-16A(241)	22-29-2161	AE-6410-16C(241)	NOT TOOLED	AE-6410-16A(231)	NOT TOOLED	NOT TOOLED	NOT TOOLED	AE-6410-16A(228)	NOT TOOLED

SEE SHEET 1 EC NO: UCP2012-1821 DRWN:WSTROH 2011/12/22 CHKD:MKIPPER 2012/01/03 APPR:FSMITH 2012/02/02	QUALITY SYMBOLS ▽=0 ▽=0 ▽=0	GENERAL TOLERANCES (UNLESS SPECIFIED)		DIMENSION STYLE MM/IN	SCALE 4:1	DESIGN UNITS METRIC	THIRD ANGLE PROJECTION	
		4 PLACES ± --- ± ---	3 PLACES ± --- ± .010	DRAWN BY T. MAHON	DATE 28/01/03	TITLE WAFER, FRICTION LOCK KK (2.54)/.100 FOR (0.64)/.025 SQ. PINS		
		2 PLACES ± 0.25 ± .014	1 PLACE ± 0.35 ± ---	CHECKED BY BMAGUIRE	DATE 28/01/03	MOLEX MOLEX INCORPORATED		
		ANGULAR ± .5 °		APPROVED BY JDENNEHY	DATE 2005/03/11	DOCUMENT NO. SDAE-6410-N		
BC	REV	DRAFT WHERE APPLICABLE MUST REMAIN WITHIN DIMENSIONS		SIZE C	THIS DRAWING CONTAINS INFORMATION THAT IS PROPRIETARY TO MOLEX INCORPORATED AND SHOULD NOT BE USED WITHOUT WRITTEN PERMISSION			
				SEE CHART		SHEET NO. 3 OF 4		

VOIDED CIRCUIT OPTION

ENG. NO.	AE-6410-NA(197)-*		
DIM. D	7.50/.295		
DIM. C	14.22 /.560		
DIM. F (REF)	3.56 /.140		
DIM. G	N/A		
DIM. T	OVERALL		
PLATING	197		
PART No.	ENG No.	CKT SIZE	VOID LOCATION
38-00-7222	AE-6410-3A(197)-2	3	2
↑ 4749	↑ -4A(197)-3	4	3
0611	-5A(197)-3	5	3
0089	-6A(197)-3	6	3
0090	-6A(197)-51	6	3,4,5
5370	-15A(197)-02	15	2
↓ 7688	↓ -12A(197)-09	12	9

SEE SHEET 1 EC NO: UCP2012-1821 DRW:MMSTROH 2011/12/22 CHKD:HKIPPER 2012/01/03 APPR:FSMITH 2012/02/02	REV BC	DESCRIPTION QUALITY SYMBOLS $\nabla = 0$ $\nabla = 0$ $\nabla = 0$	GENERAL TOLERANCES (UNLESS SPECIFIED)		DIMENSION STYLE		SCALE	DESIGN UNITS	THIRD ANGLE PROJECTION				
					MM/IN		4:1	METRIC					
					mm	INCH	DRAWN BY	DATE	TITLE				
					4 PLACES ± --- ± ---		T. MAHON	28/01/03	WAFER, FRICTION LOCK KK (2.54)/.100 FOR (0.64)/.025 SQ. PINS				
		3 PLACES ± --- ± .010		CHECKED BY	DATE								
		2 PLACES ± 0.25 ± .014		BMAGUIRE	28/01/03	MOLEX INCORPORATED SDAE-6410-N							
		1 PLACE ± 0.35 ± ---		APPROVED BY	DATE								
		ANGULAR ± .5 °		JDENNEHY	2005/03/11	DOCUMENT NO.		SHEET NO.					
		DRAFT WHERE APPLICABLE MUST REMAIN WITHIN DIMENSIONS		SEE CHART		SDAE-6410-N		4 OF 4					
				SIZE	THIS DRAWING CONTAINS INFORMATION THAT IS PROPRIETARY TO MOLEX INCORPORATED AND SHOULD NOT BE USED WITHOUT WRITTEN PERMISSION								
				B									