

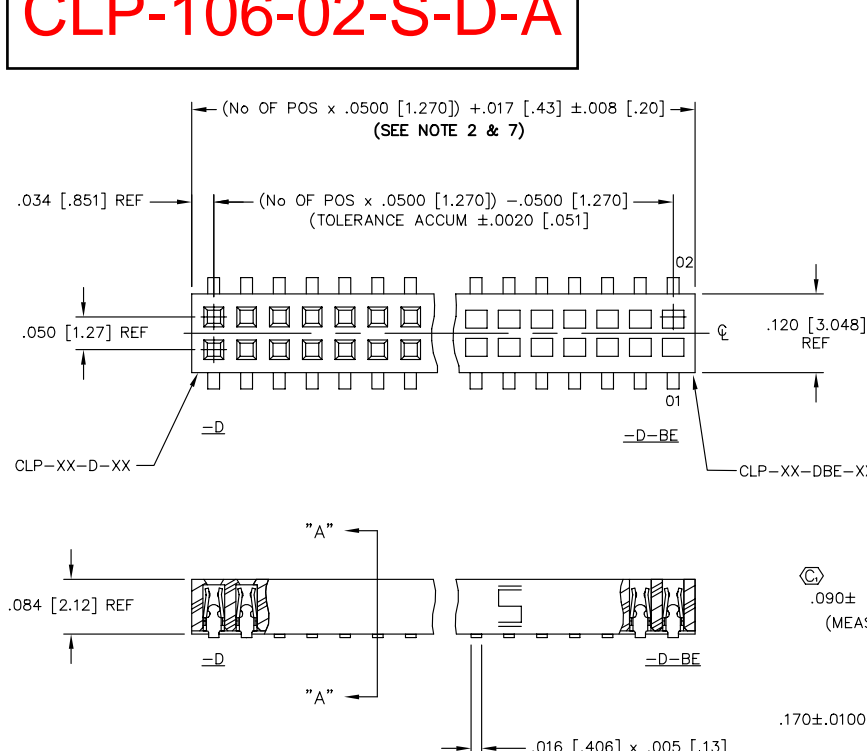
REVISION BN

DO NOT SCALE FROM THIS PRINT

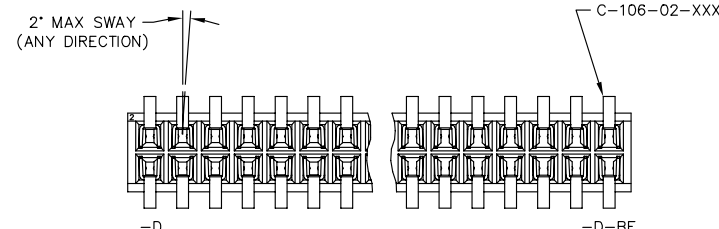
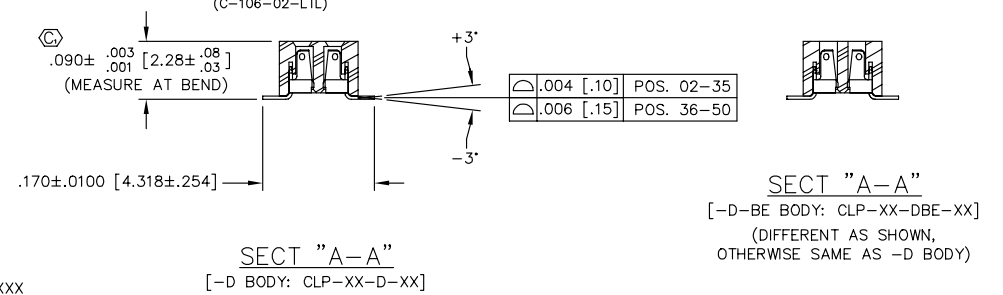
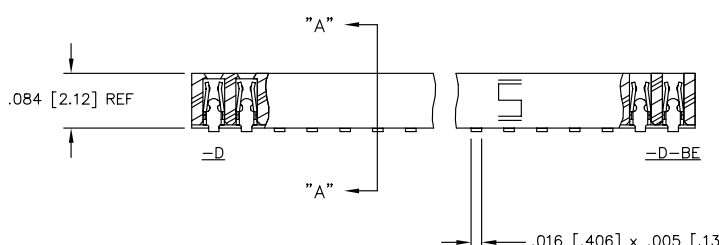
25-05292

CLP-106-02-S-D-A

UNLESS OTHERWISE NOTED DIMENSIONS ARE IN INCHES [MILIMETERS ARE IN BRACKETS]		TOLERANCES ARE:	TITLE: LOW PROFILE .050 x .050 DOUBLE ROW ASM	DWG NO: CLP-1XX-XX-XXX-D-XX SHEET 1 OF 2
ONE PLACE DECIMALS ± .1[.254]	THREE PLACE DECIMALS ± .005[.127]	ANGLES ± 2°		
TWO PLACE DECIMALS ± .01[.25]	FOUR PLACE DECIMALS ± .0020[.051]			



- CLP-1XX-XX-XXX-D-XX
- No OF POSITIONS/ ROW
-02 THRU -50
- LEAD STYLE SPEC**
-02: SURFACE MOUNT
(USE C-106-02-XXX)
- PLATING SPEC**
-F: FLASH GOLD IN CONTACT AREA, (C-106-02-F WITH TIN REMAINDER)
-L: LIGHT GOLD IN CONTACT AREA, (C-106-02-L WITH TIN REMAINDER)
-S: SELECTIVE GOLD IN CONTACT AREA (C-106-02-S WITH TIN REMAINDER)
-G: LIGHT GOLD OVER ENTIRE CONTACT (C-106-02-G)
-H: HEAVY GOLD OVER ENTIRE CONTACT (C-106-02-H)
- BODY SPEC**
-D: DOUBLE ROW
(USE CLP-XX-D)
- OPTION**
-P: PICK & PLACE PAD (USE MPP-01) (AVAILABLE ON POSITION -05 THRU -50 ONLY) (NOT AVAILABLE WITH -PA OR -K OPTIONS) (SEE FIG. 3, SHT 2 AND NOTE 3)
-A: ALIGNMENT PIN (USE CLP-XX-D-XX) (NOT AVAILABLE WITH -PA OPTION) (SEE FIG. 2, SHT 2)
-TR: TAPE & REEL
-BE: BOTTOM ENTRY ONLY (USE CLP-XX-DBE-XX)
-PA: PICK & PLACE PAD WITH ALIGNMENT PINS (NOT AVAILABLE WITH -P, -A OR -K OPTIONS) (SEE PAGE 2, TABLE 3 UNDER FIG 4.
-K: POLYAMIDE FILM PAD (POSITIONS -05 THRU -50 ONLY) (USE K-500-300, SEE FIG. 5- SHT 2) (.005 [.13] THICKNESS WITH SILICONE ADHESIVE) (NOT AVAILABLE WITH -P OR -PA OPTIONS)
- BN** -LM: LIGHT SELECTIVE GOLD/MATTE TIN TAIL (C-106-02-L)
BN -FM: FLASH GOLD/MATTE TIN TAIL (C-106-02-F)
BN -SM: SELECTIVE GOLD/MATTE TIN TAIL (C-106-02-S)
-LTL: TIN/LEAD (C-106-02-LTL)



- NOTES:
1. MINIMUM PUSHOUT FORCE: .5 lb (8 OZ).
 2. ONE POSITION WILL BE LOST FOR EVERY CUT MADE ON A SOCKET STRIP: CUT FLASH TO BE .010 [.25] MAX WITH NO FLASH ALLOWED IN HOLES OR EXTENDING BELOW LEADS.
 3. TUBE PACKAGE POSITIONS 5 - 50 ONLY. POSITIONS 2-4 ARE TO BE LAYER PACKAGED.
 4. SHEAR TAILS TO DIMENSIONS SHOWN: .003 [.08] MAX BURR.
 5. PARTS TO BE SYMMETRICAL ABOUT CL WITHIN ±.0015.
 6. Ⓞ REPRESENTS A CRITICAL DIMENSION.
 7. ENDWALL AFTER CUTTING: .0185±.0025 [.470±.064]
 8. VOID CORES MAY NOT BE PRESENT.
 9. NOTE DELETED.

FIG. 1

PROPRIETARY NOTE
THIS DOCUMENT CONTAINS INFORMATION CONFIDENTIAL AND PROPRIETARY TO SAMTEC INC. AND SHALL NOT BE REPRODUCED OR TRANSMITTED TO OTHER DOCUMENTS OR DISCLOSED TO OTHERS OR USED FOR ANY PURPOSE OTHER THAN THAT FOR WHICH IT WAS OBTAINED WITHOUT THE EXPRESSED WRITTEN CONSENT OF SAMTEC INC.

MATERIAL:
BODY: LCP
COLOR: BLACK
CONTACT: PHOSPHOR BRONZE

PLOT SCALE: .150/ DIMSCALE: .125

EXISPROD\ASSEMBLY\050
CLP-DASM

samtec

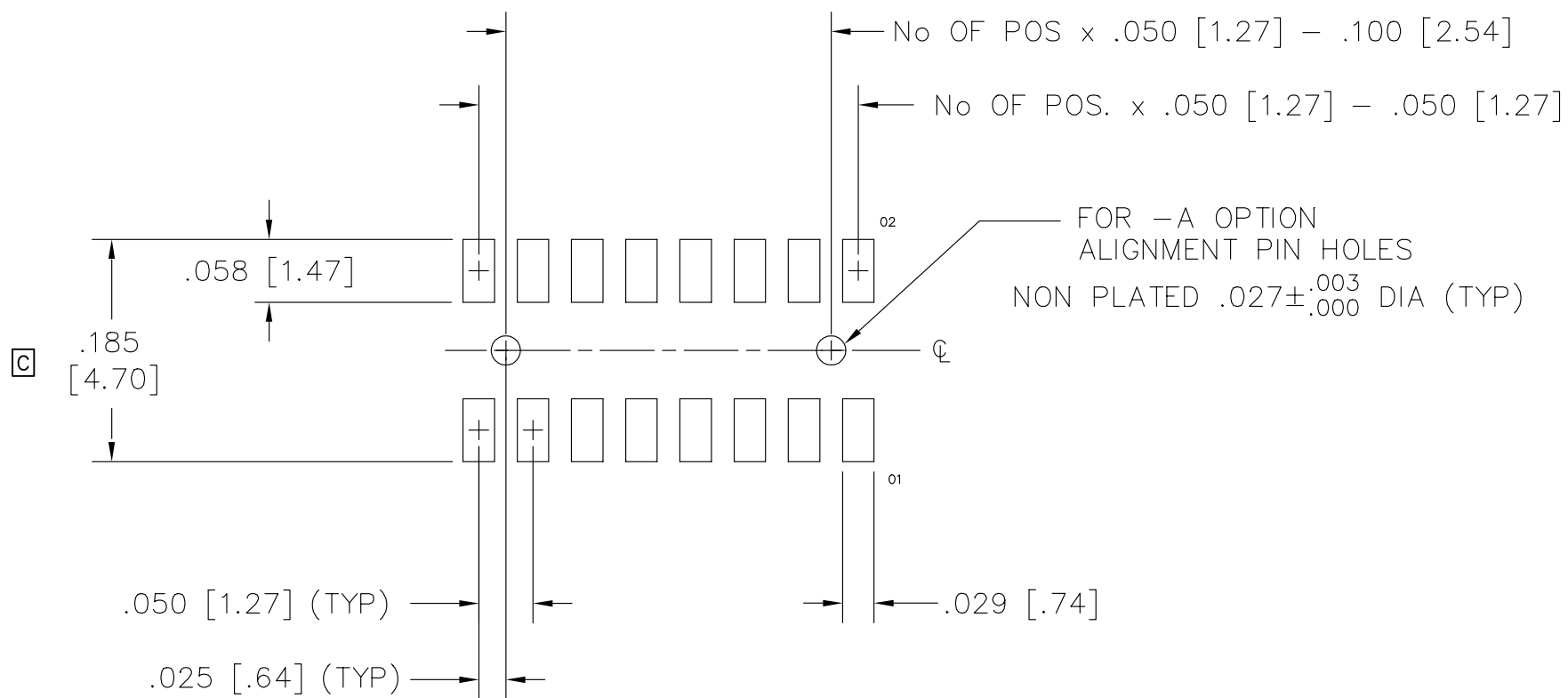
520 PARK EAST BLVD. NEW ALBANY, INDIANA 47150
PHONE (812) 944-6733 P.O. BOX 1147
CODE 55322

MADE BY: PURVIS 1-31-94

SHEET 1 OF 2
CLP-1XX-XX-XXX-D-XX

RECOMMENDED P.C. BOARD LAYOUT FOR CLP (SURFACE MOUNT)

REV. C



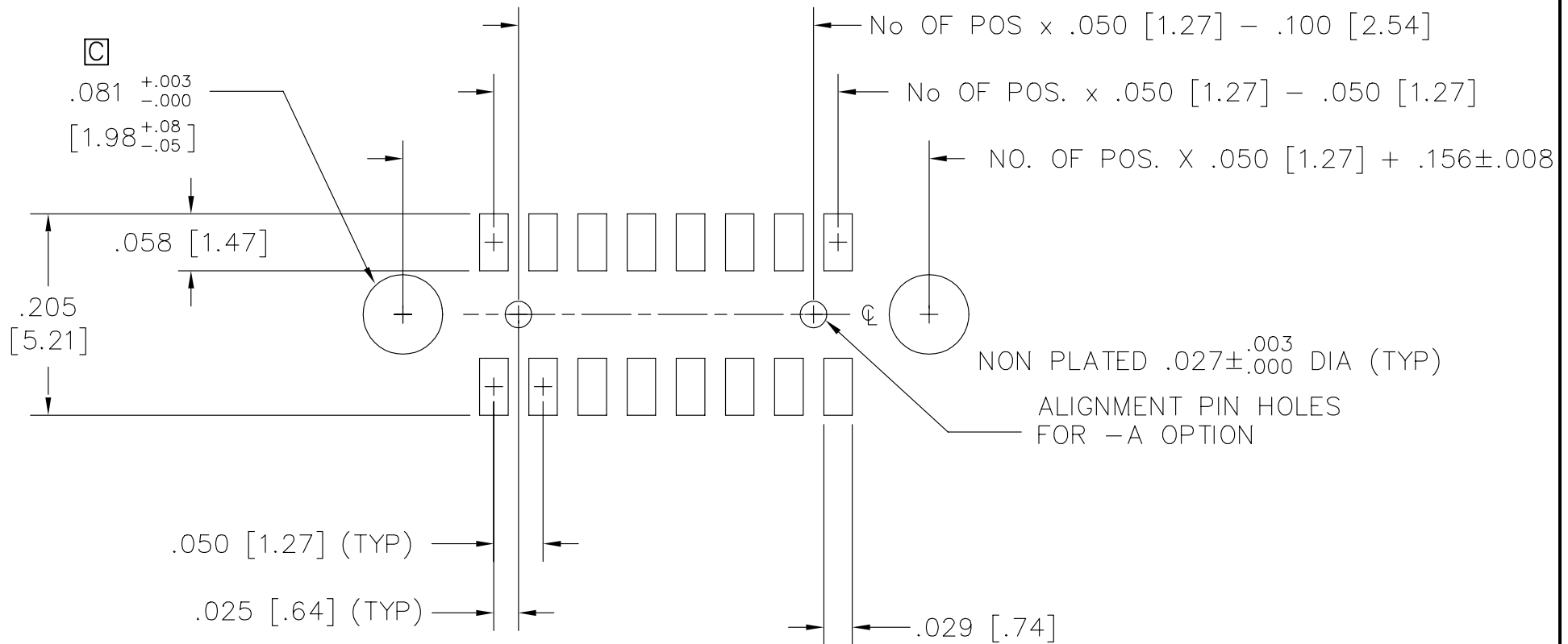
samtec
 MISC\MKTG\FOOTPRINT
 CLP-DV

520 PARK EAST BLVD. NEW ALBANY, INDIANA 47150
 PHONE (812) 944-6733 P.O. BOX 1147

PLOT SCALE: 1 = .1

RECOMMENDED P.C. BOARD LAYOUT FOR CLP WHEN USED WITH FTSH-EP (SURFACE MOUNT)

REV. C



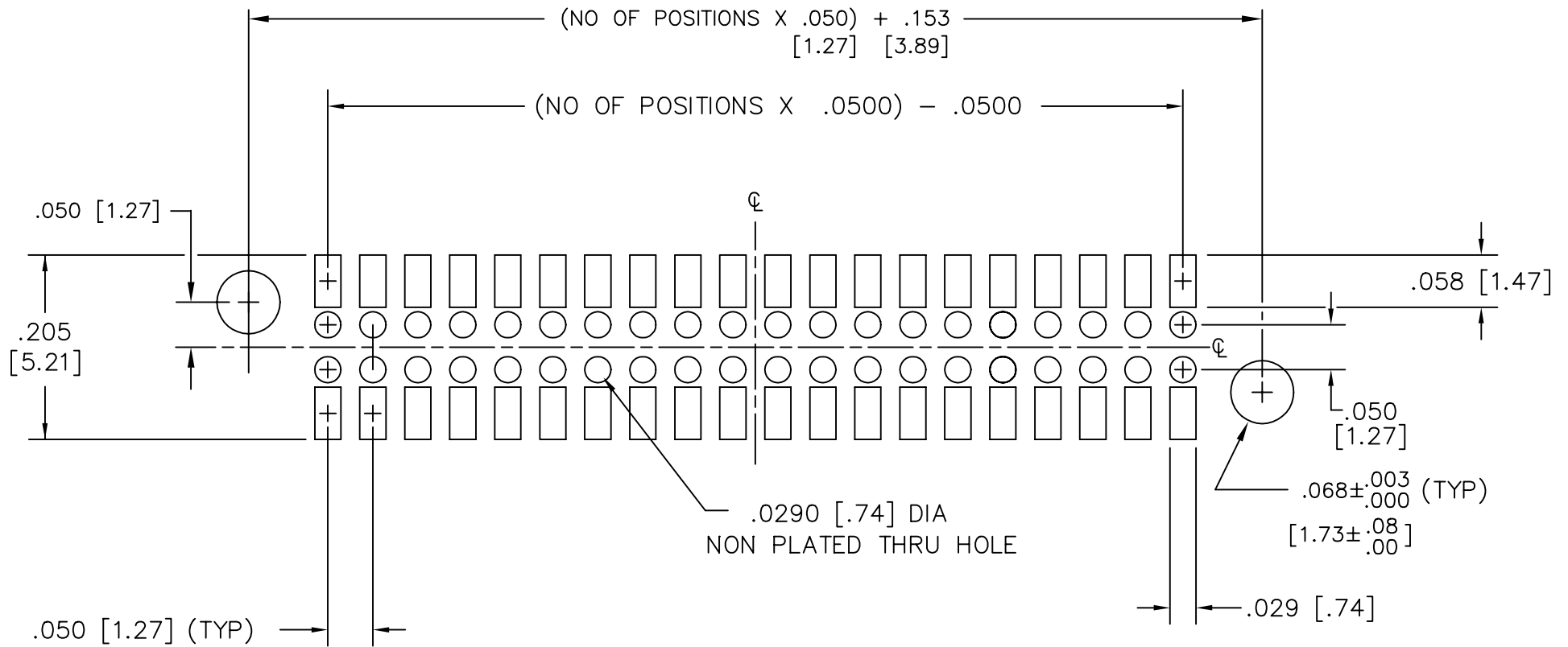
samtec
 MISC\MKTG\FOOTPRINT
 CLP-DV-EP

810 PROGRESS BLVD. NEW ALBANY, INDIANA 47150
 PHONE (812) 944-6733 P.O. BOX 1147

PLOT SCALE: 1 = .1

RECOMMENDED P.C. BOARD LAYOUT FOR CLP TO MATE WITH FTSH SURFACE MOUNT WITH EL OPTION (DOUBLE)

REV. A



MISC\MKTG\FOOTPRINT
CLP-FTSH

samtec

810 PROGRESS BLVD. NEW ALBANY, INDIANA 47150
PHONE (812) 944-6733 P.O. BOX 1147

PLOT SCALE: 1 = .1

REV. BJ

UNLESS OTHERWISE NOTED
DIMENSIONS ARE IN INCHES [MILLIMETERS ARE IN BRACKETS]

TOLERANCES ARE:
ONE PLACE DECIMALS ± .1[2.54] THREE PLACE DECIMALS ± .005[.127] ANGLES ± 2°
TWO PLACE DECIMALS ± .01[.25] FOUR PLACE DECIMALS ± .0020[.051]

TITLE: LOW PROFILE
.050 x .050
DOUBLE ROW ASM

DWG NO: CLP-1XX-XX-X-D-XX
SHEET 2 OF 2

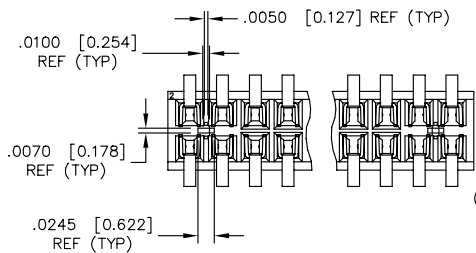
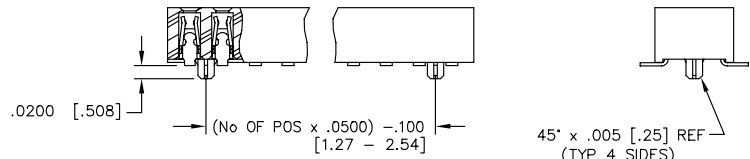


FIG. 2
-A: ALIGNMENT PIN
[3 POSITION MINIMUM]
(NOT AVAILABLE WITH -PA OPTION)
DIFFERENT AS SHOWN
OTHERWISE SAME AS FIG. 1

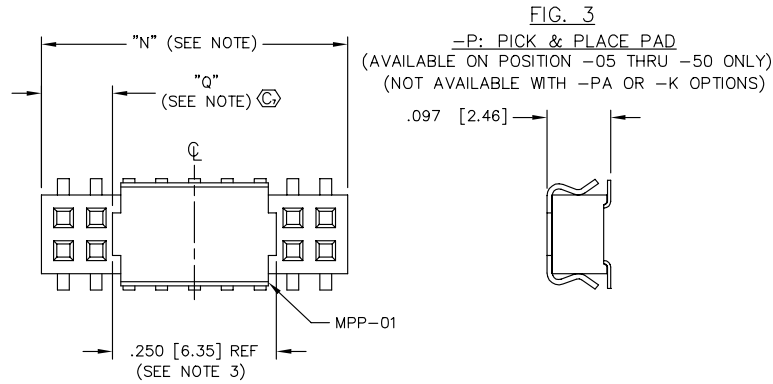
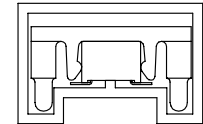


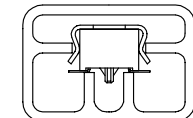
FIG. 3
-P: PICK & PLACE PAD
(AVAILABLE ON POSITION -05 THRU -50 ONLY)
(NOT AVAILABLE WITH -PA OR -K OPTIONS)

.250 [6.35] REF (SEE NOTE 3)
AVAILABLE ON POSITIONS 05 THRU 50 ONLY
NOTE: "N" = USED MEASURED DIMENSION (REF)
"Q" = {"N" - .250 [6.35]} / 2 ± .020 [.51]

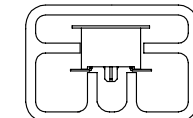
PACKAGING
(SEE NOTE 3, SHEET 1)



PT-CLP001-PA



PT-1-24-01-65

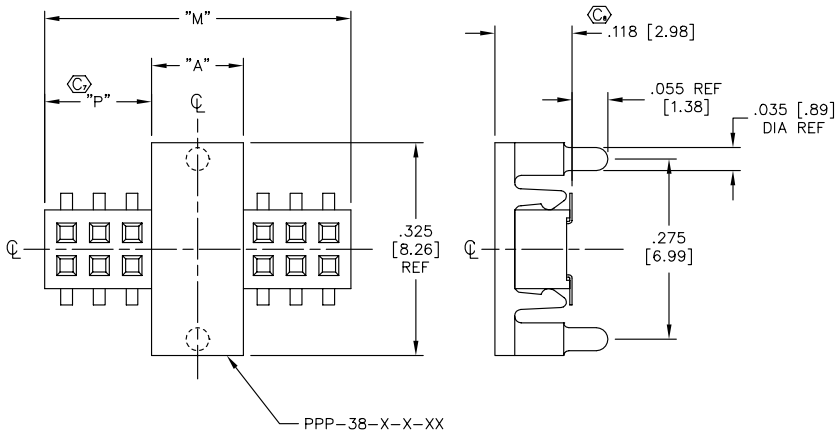


PT-1-24-02-65

SCALE: .75x

OPTION	TUBE	PLUG
NONE, -A	PT-1-24-02-65	TP-33
-P, -A-P	PT-1-24-01-65	TP-33
-A-K, -K	PT-1-24-02-65	TP-33
-PA	PT-CLP001-PA	TP-24-02

FIG. 4
-PA: PICK & PLACE PAD WITH ALIGNMENT PINS
(NOT AVAILABLE WITH -P, -A OR -K OPTIONS)

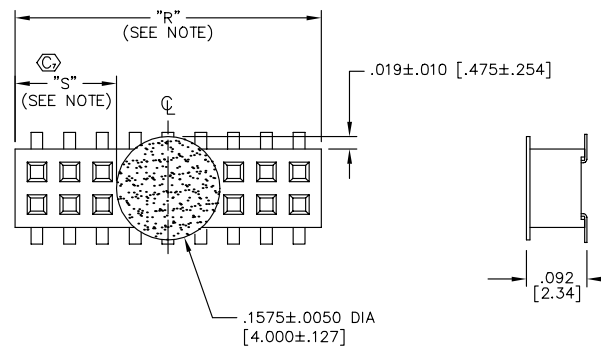


POS/ROW	"A"	"M"	"P"
4-15	.140 [3.56] REF	USED MEASURED DIMENSION (REF)	{{("M" - "A") / 2} ± .020 [.51]}
16-50	.280 [7.11] REF		

POS/ROW	PIN COUNT	PAD
4-15	ODD	PPP-38-O-4-15
	EVEN	PPP-38-E-4-15
16-50	ODD	PPP-38-O-16-50
	EVEN	PPP-38-E-16-50

PROPRIETARY NOTE
THIS DOCUMENT CONTAINS INFORMATION CONFIDENTIAL AND PROPRIETARY TO SAMTEC INC. AND SHALL NOT BE REPRODUCED OR TRANSMITTED IN ANY FORM OR BY ANY MEANS, ELECTRONIC OR MECHANICAL, INCLUDING PHOTOCOPYING, RECORDING, OR BY ANY INFORMATION STORAGE AND RETRIEVAL SYSTEM, WITHOUT THE EXPRESS WRITTEN CONSENT OF SAMTEC INC.

FIG. 5
-K: POLYAMIDE FILM PAD
AVAILABLE ON POSITIONS -05 THRU -50 ONLY
(NOT AVAILABLE WITH -P OR -PA OPTIONS)



NOTE: "R" = USED MEASURED DIMENSION (REF)
"S" = {"R" - .1575 [4.00]} / 2 ± .020 [.51]

samtec

EXISPROD\ASSEMBLY\050
CLPDASM2
520 PARK EAST BLVD. NEW ALBANY, INDIANA 47150
PHONE (812) 944-6733 P.O. BOX 1147
CODE 55322

MADE BY: PURVIS 08-04-97 CLP-1XX-XX-X-D-XX
SHEET 2 OF 2