

**PART NUMBER CODING**

C S N

03

**TERMINATION TYPE**

**NUMBER OF POSITIONS PER ROW**  
(01 THRU 36)

**PLATING**

ALL PLATINGS HAVE .000050" NICKEL UNDERPLATE

CONTACT SURFACE TERMINATION

B = .000010" GOLD .000100" PURE TIN, MATTE

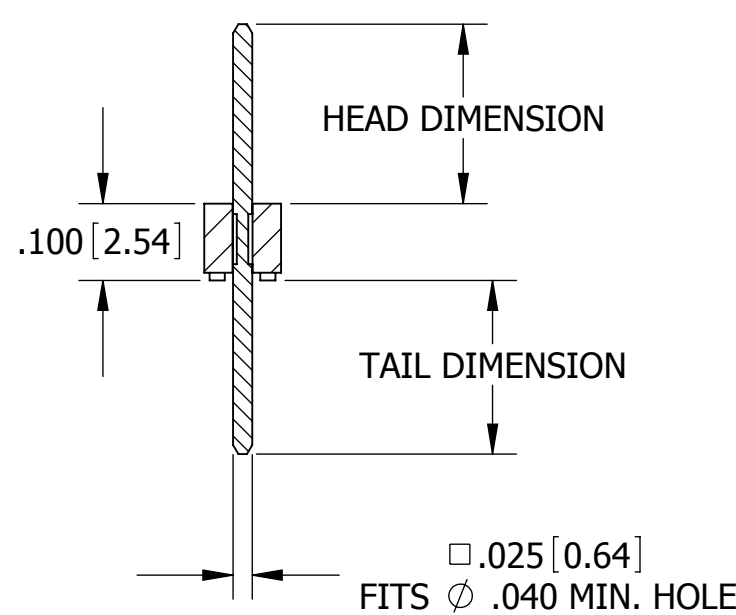
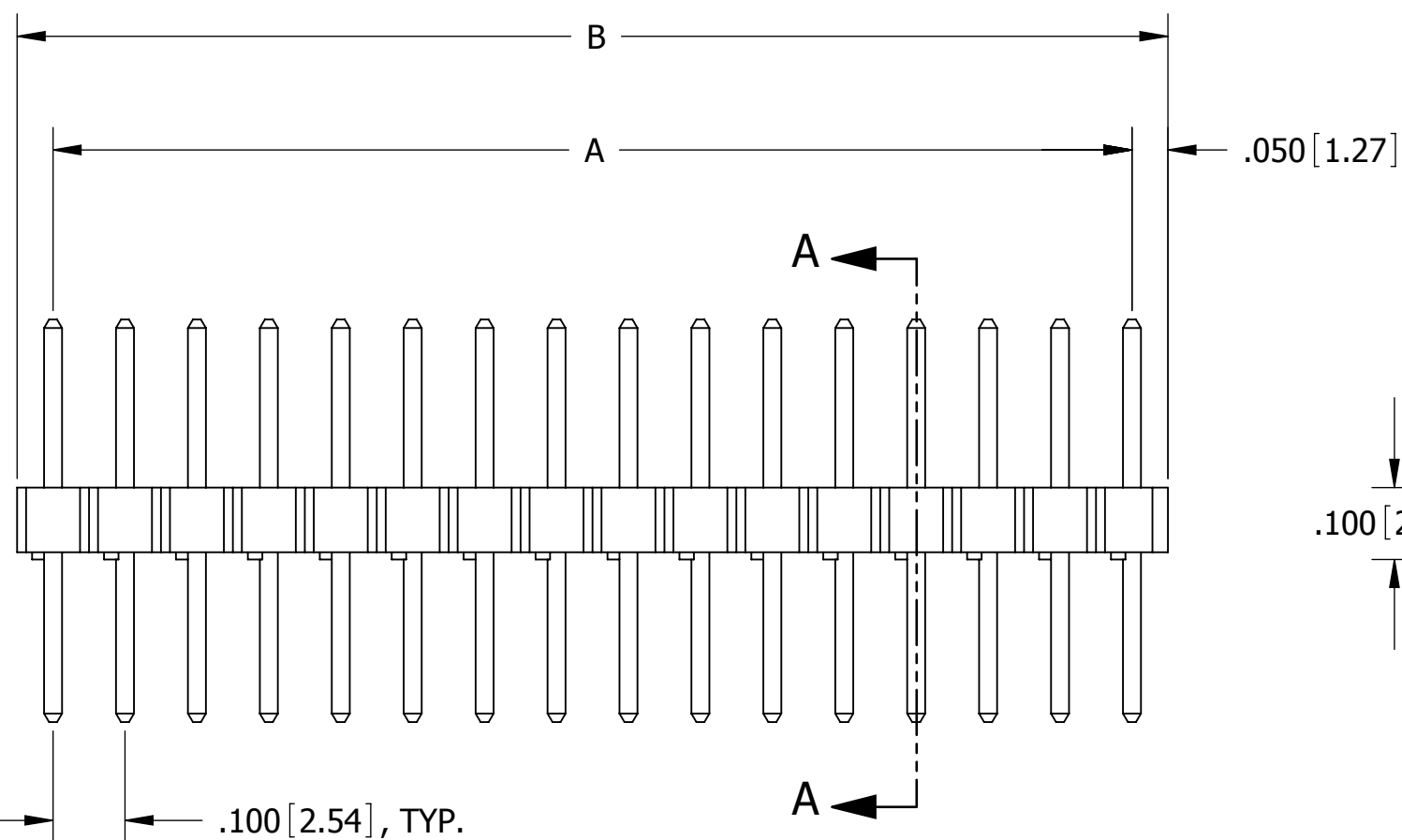
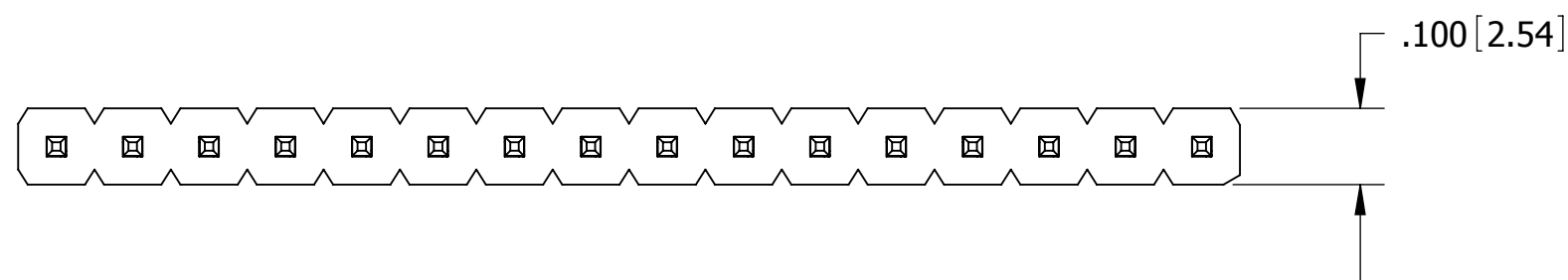
C = .000030" GOLD .000100" PURE TIN, MATTE

E = .000100" PURE TIN, MATTE OVERALL

**INSULATOR MATERIAL**

P= PBT  
OPERATING TEMP: -65°C TO +125°C  
PROCESSING TEMP: 260°C FOR 10 SECS MAX

G= PA9T  
OPERATING TEMP: -65°C TO +150°C  
PROCESSING TEMP: 260°C FOR 120 SECS MAX



**G \_ C \_ \_ S \_ \_ N ; P \_ C \_ \_ S \_ \_ N**

**STRAIGHT**

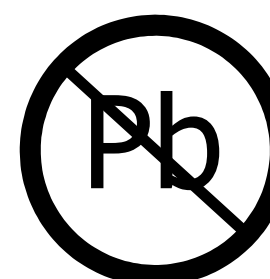
REVISIONS				
REV.	ECO. NO	DESCRIPTION	DATE	BY
A	572	INITIAL RELEASE	3/21/05	AN
B	1144	ADD ALL TERMINATION TYPES	9/14/2006	MV
C	2078	UPDATE TEMPERATURE TO 150°C FOR 'G' MTL, CORRECT NOTE 6 & 7, ADD NEW TERMINATION TYPES AI, AJ, AK, FF, FG, FH, FI, FJ, ZB, ZI, ZJ, ZO, ZQ, ZR, COMBINED 'P' MTL IN P/N CODING (DWG 10640 OBSOLETE)	11/12/2009	JH

TERMINATION TYPE			A		B	
CODE	HEAD DIMENSION	TAIL DIMENSION	INCH	MM	INCH	MM
			± .008	± 0.20	± .020	± 0.51
AA	.230[5.84]	.120[3.05]				
AB	.230[5.84]	.230[5.84]				
AC	.230[5.84]	.320[8.13]				
AD	.230[5.84]	.420[10.67]				
AE	.230[5.84]	.520[13.21]				
AF	.230[5.84]	.620[15.75]				
AG	.230[5.84]	.720[18.29]				
AH	.230[5.84]	.820[20.83]				
AI	.230[5.84]	.900[22.86]				
AJ	.230[5.84]	1.000[25.40]				
AK	.230[5.84]	.035[0.89]				
FA	.318[8.08]	.120[3.05]				
FB	.318[8.08]	.220[5.59]				
FC	.318[8.08]	.320[8.13]				
FD	.318[8.08]	.420[10.67]				
FE	.318[8.08]	.520[13.21]				
FF	.318[8.08]	.620[15.75]				
FG	.318[8.08]	.710[18.29]				
FH	.318[8.08]	.810[20.83]				
FI	.318[8.08]	.910[23.37]				
FJ	.318[8.08]	.050[1.27]				
ZA	.120[3.05]	.120[3.05]				
ZB	.120[3.05]	.095[2.41]				
ZC	.120[3.05]	.260[6.60]				
ZD	.120[3.05]	.610[15.49]				
ZI	.520[13.21]	.110[2.79]				
ZJ	.720[18.29]	.110[2.79]				
ZO	.820[20.83]	.110[2.79]				
ZQ	1.020[25.91]	.110[2.79]				
ZR	1.220[30.99]	.110[2.79]				
__C01S__N	0.000	0.00	0.100	2.54		
__C02S__N	0.100	2.54	0.200	5.08		
__C03S__N	0.200	5.08	0.300	7.62		
__C04S__N	0.300	7.62	0.400	10.16		
__C05S__N	0.400	10.16	0.500	12.70		
__C06S__N	0.500	12.70	0.600	15.24		
__C07S__N	0.600	15.24	0.700	17.78		
__C08S__N	0.700	17.78	0.800	20.32		
__C09S__N	0.800	20.32	0.900	22.86		
__C10S__N	0.900	22.86	1.000	25.40		
__C11S__N	1.000	25.40	1.100	27.94		
__C12S__N	1.100	27.94	1.200	30.48		
__C13S__N	1.200	30.48	1.300	33.02		
__C14S__N	1.300	33.02	1.400	35.56		
__C15S__N	1.400	35.56	1.500	38.10		
__C16S__N	1.500	38.10	1.600	40.64		
__C17S__N	1.600	40.64	1.700	43.18		
__C18S__N	1.700	43.18	1.800	45.72		
__C19S__N	1.800	45.72	1.900	48.26		
__C20S__N	1.900	48.26	2.000	50.80		
__C21S__N	2.000	50.80	2.100	53.34		
__C22S__N	2.100	53.34	2.200	55.88		
__C23S__N	2.200	55.88	2.300	58.42		
__C24S__N	2.300	58.42	2.400	60.96		
__C25S__N	2.400	60.96	2.500	63.50		
__C26S__N	2.500	63.50	2.600	66.04		
__C27S__N	2.600	66.04	2.700	68.58		
__C28S__N	2.700	68.58	2.800	71.12		
__C29S__N	2.800	71.12	2.900	73.66		
__C30S__N	2.900	73.66	3.000	76.20		
__C31S__N	3.000	76.20	3.100	78.74		
__C32S__N	3.100	78.74	3.200	81.28		
__C33S__N	3.200	81.28	3.300	83.82		
__C34S__N	3.300	83.82	3.400	86.36		
__C35S__N	3.400	86.36	3.500	88.90		
__C36S__N	3.500	88.90	3.600	91.44		

- NOTES:
- INSULATOR MATERIAL: SEE PART NUMBER CODING
  - CONTACT MATERIAL: PHOSPHOR BRONZE
  - PLATING: SEE PART NUMBER CODING
  - UL FLAMMABILITY RATING: 94V-0
  - VOLTAGE RATING: 600 VDC MINIMUM AT SEA LEVEL.
  - CURRENT RATING: 3 AMPS
  - CONTACT RESISTANCE: 30 MILLIOHMS MAX.
  - INSULATION RESISTANCE: 5000 MEGOHMS MIN.
  - MOISTURE SENSITIVITY LEVEL= 1

25-05192

**CUSTOMER COPY**



RoHS COMPLIANT

UNLESS OTHERWISE SPECIFIED:  
DIMENSIONS ARE IN INCHES[MM]  
TOLERANCES:  
ANGULAR: ± 30°  
PROPRIETARY INFORMATION OF SULLINS ELECTRONICS AND IS NOT TO BE REPRODUCED, USED OR DISCLOSED TO OTHERS FOR ANY PURPOSE EXCEPT AS SPECIFICALLY AUTHORIZED IN WRITING BY AN OFFICER OF SULLINS ELECTRONICS.  
INTERPRET DIMENSIONS AND GEOMETRIC TOLERANCING PER: ANSI Y14.5M-1994

DRAWN	DATE	NAME	
		Aria	
THE INFORMATION HEREIN CONTAINS PROPRIETARY INFORMATION OF SULLINS ELECTRONICS AND IS NOT TO BE REPRODUCED, USED OR DISCLOSED TO OTHERS FOR ANY PURPOSE EXCEPT AS SPECIFICALLY AUTHORIZED IN WRITING BY AN OFFICER OF SULLINS ELECTRONICS.			DESCRIPTION .100" CC, HEADER, STRAIGHT PART NUMBER <b>G _ C _ _ S _ _ N ; P _ C _ _ S _ _ N</b>
SIZE	DWG. NO.	REV	
<b>C</b>	<b>C10436</b>	<b>C</b>	
SCALE: 4:1			SHEET 1 OF 1