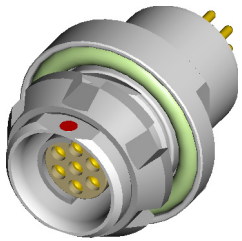


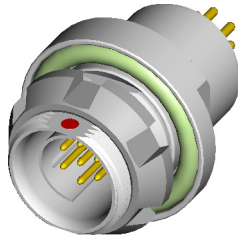
# DBPE/U 102 Multipole Receptacles

All dimensions see note 1)

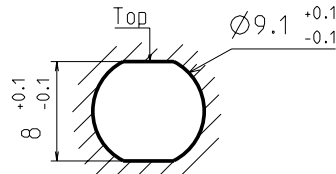
Contact polarity A



Contact polarity Z

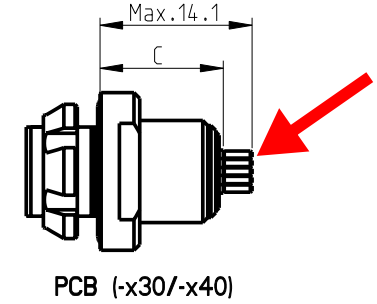


Panel:  
Min.2  
Max.3.5

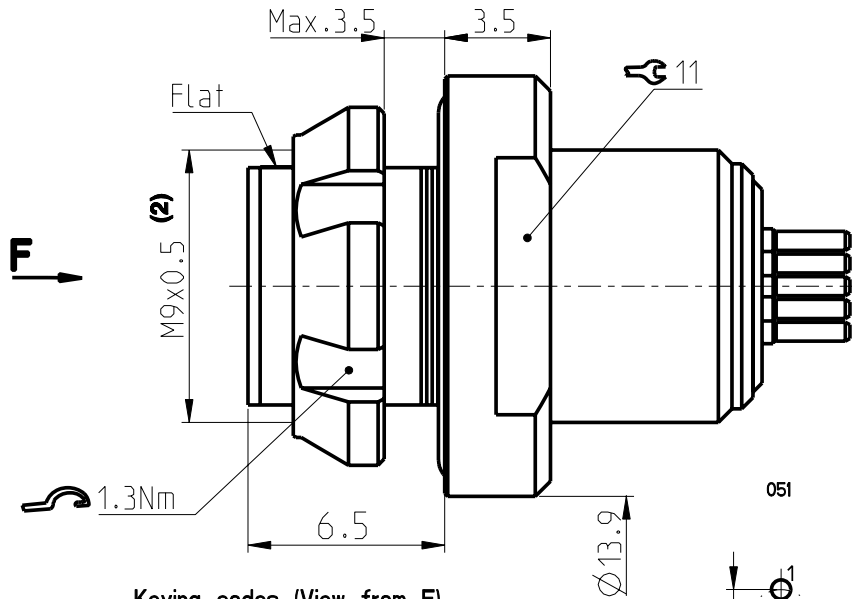


Panel cut-out

nLIGHT P#=  
25-05176 for  
Fischer P#=  
DBPE 102 A056-140



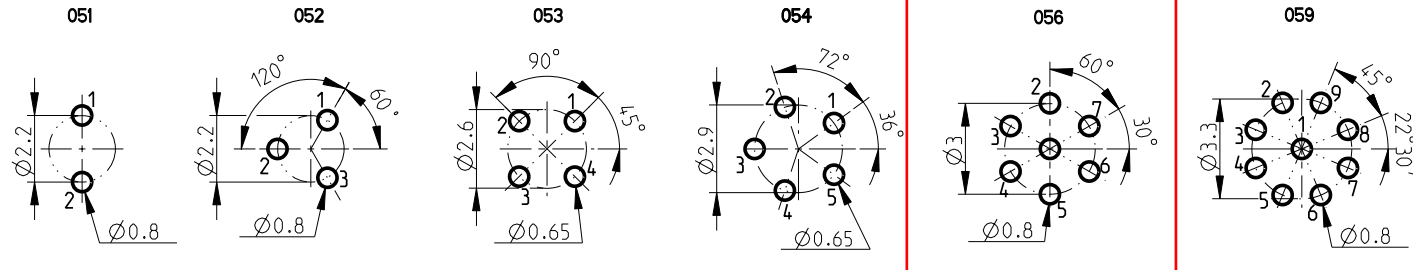
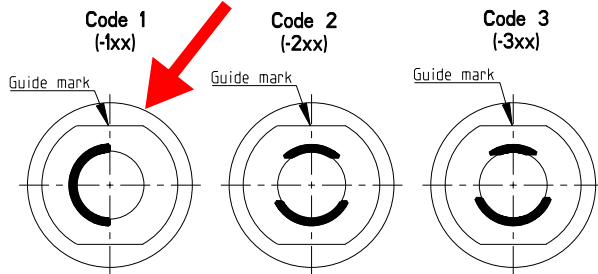
PCB (-x30/-x40)



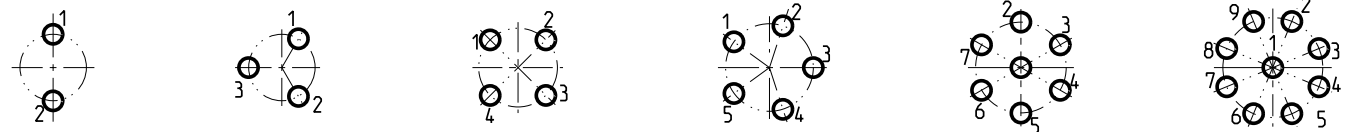
CONTACT CONFIGURATION	Contacts	Solder cup $\phi$	C	PIN $\phi$
102 A Z 051	2	0.79	11.4 11.6	0.63
102 A Z 052	3	0.79	11.4 11.6	0.63
102 A Z 053	4	0.79	11.4 11.3	0.50
102 A Z 054	5	0.79	11.4 11.3	0.50
102 A Z 056	7	0.43	10.9 11.1	0.63
102 A 059	9	0.43	10.9	0.63

Pin layout / PCB hole pattern for polarity A - View from F (3)

Keying codes (View from F)



Polarity Z - View from F



All dimensions in mm

600004

Rev.

1b

Pages

1/1

Notes:

- 1) All tolerances resulting from connector assembly are typically  $\pm 0.3\text{mm}$
- 2) If receptacle is screwed directly into threaded hole, oversize thread by  $+0.05\text{mm}$

3) Recommended PCB hole dimensions may be adjusted to application  
Part number example: DBPE 102 A056-130



www.fischerconnectors.com