

.050" (1,27mm) PITCH SOCKETS SFMC SERIES

SPECIFICATIONS

For complete specifications and recommended PCB layouts see www.samtec.com/SFMC

Insulator Material:

Black Liquid Crystal Polymer



Contact Material:

Tiger Eye = BeCu
Tiger Eye LITE = Phosphor Bronze

Plating:

Au over 50µ" (1,27µm) Ni

Current Rating:

2A @ 80°C ambient

Operating Temp Range:

-55°C to +125°C

Contact Resistance:

15 mΩ max

Insertion Depth:

(3,05mm) .120" to (4,06mm) .160"

Insertion Force:

(Single contact only) Standard= 2.5oz (0,69N) avg.

LITE= 2.0oz (0,56N) avg.

LIF= 1.5oz (0,42N) avg.

Normal Force:

Standard= 132g (1,29N) avg.

LIF= 90g (0,88N) avg.

Withdrawal Force:

(Single contact only) Standard= 2.0oz (0,56N) avg.

LITE= 1.5oz (0,42N) avg.

LIF= 1.5oz (0,42N) avg.

Max Cycles:

10,000 with 30µ" (0,76µm) Au

RoHS Compliant:

Yes

Processing:

Max Processing Temp:

230°C for 60 seconds, or 260°C for 20 seconds 3x

Lead-Free Solderable:

Yes

SMT Lead Coplanarity:

(0,10mm) .004" max (02-26)

(0,15mm) .006" max (27-50)

Mates with:

TFM, FTSH(LIF), FW(LIF), TFMDL, FMTP, FFMD



High reliability Tiger Eye contacts

Any number of positions from 2 through 50

Slotted SMT tails

25-05113 SFMC-110-L3-S-D

Available with optional Pick & Place Pads

SFMC	1	NO. PINS PER ROW	LEAD STYLE	PLATING OPTION	D	OPTION
		02 thru 50	<p>-01, -03 = Through-hole</p> <p>-L1, -L3 = Low Insertion Force Through-hole</p> <p>-02 = Surface Mount</p> <p>-L2 = Low Insertion Force Surface Mount</p> <p>-T1 = Through-hole Tiger Eye LITE</p> <p>-T2 = Surface Mount Tiger Eye LITE</p>	<p>-S = 30µ" (0,76µm) Gold on contact, Matte Tin on tail</p>		<p>-K = (4,00mm) .157 DIA Polyimide film Pick & Place Pad (4 positions minimum)</p> <p>-P = Plastic Pick & Place Pad (5 positions minimum)</p> <p>-TR = Tape & Reel</p>

LEAD STYLE	A	B
-01, -L1, -T1	(3,05) .120	(0,51) .020
-03, -L3	(1,91) .075	(0,41) .016

(1,27) .050 x No. of Positions + (0,38) .015

(3,05)

(1,27) .050 TYP

(1,27) .050 TYP

(4,57) .180

(0,51) .020

B

A

(0,13) .005 TYP

(10,00) .394 x (5,72) .225

(1,27) .050

-P OPTION

(0,58) .023

(0,13) .005 TYP

(4,19) .165

Note: Some sizes, styles and options are non-standard, non-returnable.

Due to technical progress, all designs, specifications and components are subject to change without notice.

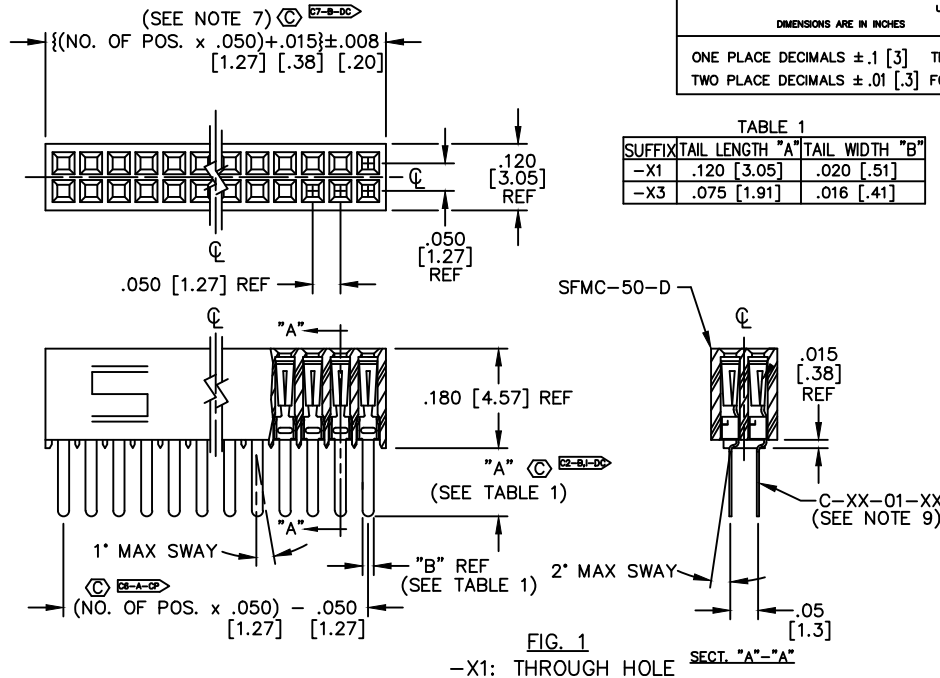
WWW.SAMTEC.COM

UNLESS OTHERWISE NOTED TOLERANCES ARE:

ONE PLACE DECIMALS ±.1 [3] THREE PLACE DECIMALS ±.005 [.13]
 TWO PLACE DECIMALS ±.01 [.3] FOUR PLACE DECIMALS ±.002 [.051] ANGLES ± 2°

TITLE: .050 X .050
 CUTTABLE SOCKET STRIP
 DOUBLE ROW ASSEMBLY

DWG NO: SFMC-1XX-XX-XX-D-XX
 SHEET 1 OF 2



SFMC-1XX-XX-XX-D-XX

NO. OF POSITIONS
 ALL POSITIONS AVAILABLE
 -02 THRU -50
 USE BODY: (SFMC-50-D)

LEAD STYLE

- 01: THROUGH HOLE (SEE FIGURE 1)
 USE CONTACT: (C-44-01-XX)
- 02: SURFACE MOUNT (SEE FIGURE 2)
 USE CONTACT: (C-44-02-XX)
- 03: STRAIGHT MODIFIED (SEE FIGURE 1)
 USE CONTACT: (C-44-03-XX)
- L1: THROUGH HOLE (LOW INSERTION)(SEE FIGURE 1)
 USE CONTACT: (C-61-01-XX)
- L2: SURFACE MOUNT (LOW INSERTION)(SEE FIGURE 2)
 USE CONTACT: (C-61-02-XX)
- L3: STRAIGHT MODIFIED (LOW INSERTION)(SEE FIGURE 1)
 USE CONTACT: (C-61-03-XX)
- T1: THROUGH HOLE (PHOS BRONZE)(SEE FIGURE 1)
 USE CONTACT: (C-119-01-XX)
- T2: SURFACE MOUNT (PHOS BRONZE)(SEE FIGURE 2)
 USE CONTACT: (C-119-02-XX)

OPTIONS
 (LEAVE BLANK FOR STANDARD)
 -P: PICK AND PLACE PAD (SEE FIGURE 3, SHT 2)
 USE PFP-02 (5 POSITIONS MINIMUM)
 -TR: TAPE & REEL (SEE FIG 4, SHT 2)
 -K: POLYIMIDE FILM PAD (.005 [.13] THICKNESS WITH SILICONE ADHESIVE) (SEE FIG 4) (USE K-500-300) (4 POS MIN)

BODY SPECIFICATION
 -D: DOUBLE ROW

PLATING SPECIFICATION

- S: 30μ" SELECTIVE GOLD IN CONTACT AREA, MATTE TIN ON TAIL
- F: 3μ" SELECTIVE GOLD IN CONTACT AREA, MATTE TIN ON TAIL
- H: 30μ" GOLD IN CONTACT AREA, 3μ" GOLD ON TAIL (ONLY AVAILABLE ON -02, -L2, & -T2 LEAD STYLES)
- FM: 3μ" SELECTIVE GOLD IN CONTACT AREA, MATTE TIN ON TAIL
- SM: 30μ" SELECTIVE GOLD IN CONTACT AREA, MATTE TIN ON TAIL
- L: 10μ" SELECTIVE GOLD IN CONTACT AREA, MATTE TIN ON TAIL

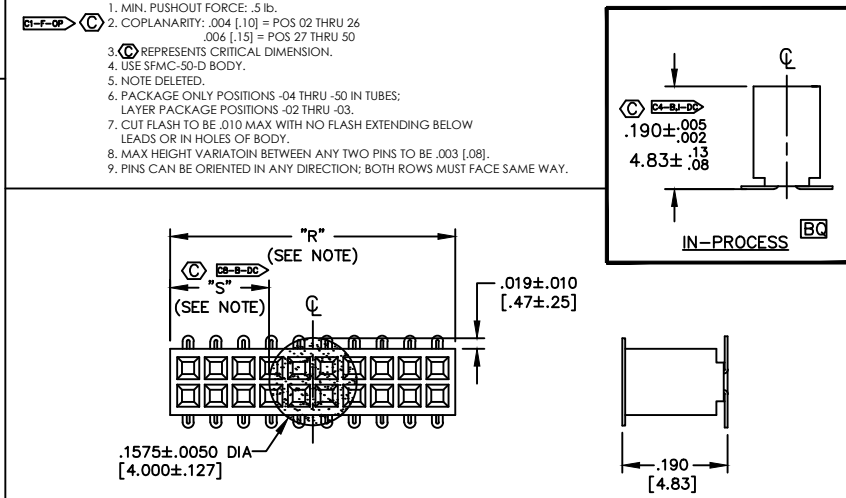
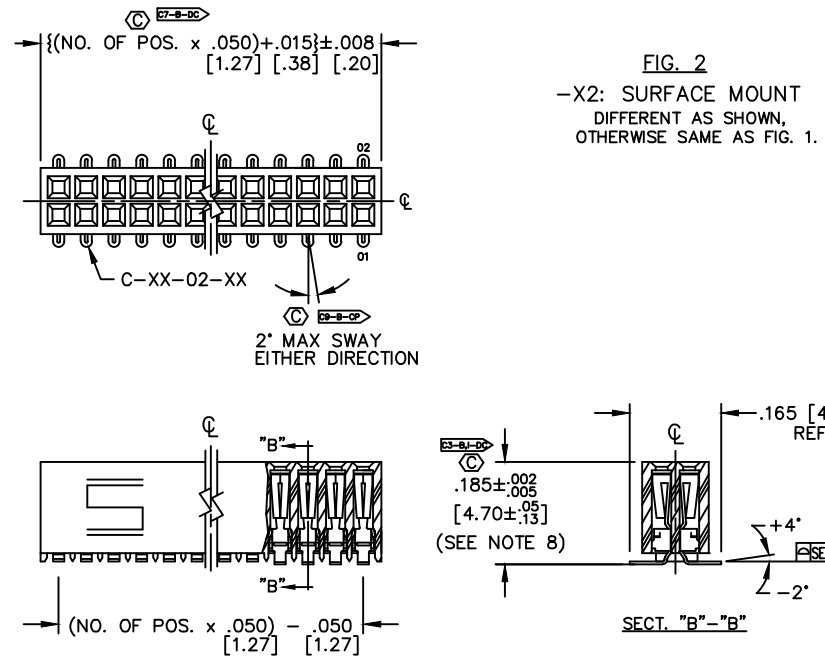
CRITICAL DIMENSION INSPECTION TABLE

ASSEMBLY OPERATION	IN-PROCESS INSPECTION
-X1, -X3 FILL CONTACT	C2, C5
-X2 FILL CONTACT	C4, C9
CUT TO POSITION	C7
ASSEMBLY KAPTON	C8
-X2 REPRESS	C3

TABLE 2 (SEE NOTE 6)

LEAD STYLE & OPTION	PACKAGING TUBE	PLUG
-X1, -X3, -X3-K	PT-1-24-15-09	TP-24-02
-X2	PT-1-24-14-09	TP-24-02
-X2-K	PT-1-24-14-09	TP-24-02
-X2-P	PT-1-24-01-38	TP-24
-X1-K	PT-1-24-15-09	TP-24-02
-X1-P, -X3-P	PT-1-24-01-09	TP-24

NOTES:
 1. MIN. PUSHOUT FORCE: 5 lb.
 2. COPLANARITY: .004 [10] = POS 02 THRU 26
 .006 [15] = POS 27 THRU 50
 3. Ⓢ REPRESENTS CRITICAL DIMENSION.
 4. USE SFMC-50-D BODY.
 5. NOTE DELETED.
 6. PACKAGE ONLY POSITIONS -04 THRU -50 IN TUBES;
 LAYER PACKAGE POSITIONS -02 THRU -03.
 7. CUT FLASH TO BE .010 MAX WITH NO FLASH EXTENDING BELOW
 LEADS OR IN HOLES OF BODY.
 8. MAX HEIGHT VARIATION BETWEEN ANY TWO PINS TO BE .003 [.08].
 9. PINS CAN BE ORIENTED IN ANY DIRECTION; BOTH ROWS MUST FACE SAME WAY.



PROPRIETARY NOTE
 THIS DOCUMENT CONTAINS INFORMATION CONFIDENTIAL AND PROPRIETARY TO SAMTEC INC. AND SHALL NOT BE REPRODUCED OR TRANSFERRED TO OTHER DOCUMENTS OR DISCLOSED TO OTHERS OR USED FOR ANY PURPOSE OTHER THAN THAT FOR WHICH IT WAS OBTAINED WITHOUT THE EXPRESSED WRITTEN CONSENT OF SAMTEC INC.

MATERIAL:
 BODY:
 LCP, UL 94 VO
 COLOR: BLACK

CONTACTS:
 C-44 & C-66:
 #25 BeCu, 1/2 HARD
 AGE HARDENED
 C-119
 PHOS BRONZE 521

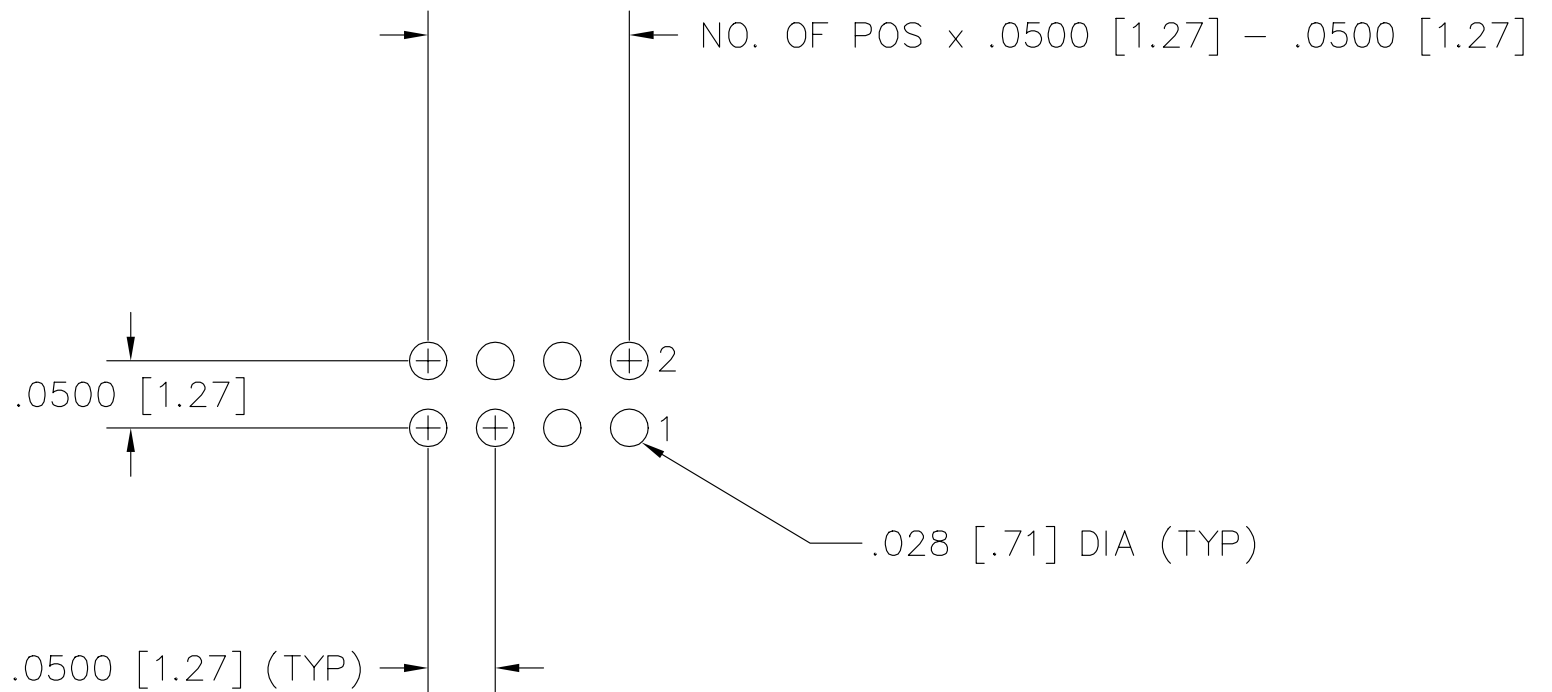


PHONE (812) 944-6733 P.O. BOX 1147
 CODE 55322

MADE BY: BRATCHER 10-5-94
 SFMC-1XX-XX-XX-D-XX
 SHEET 1 OF 2

RECOMMENDED P.C. BOARD LAYOUT FOR SFMC/SFC_□ THRU HOLE (DOUBLE)

REV. C



samtec

MISC\MKTG\FOOTPRINT
SFMCTHD

810 PROGRESS BLVD. NEW ALBANY, INDIANA 47150
PHONE (812) 944-6733 P.O. BOX 1147

PLOT SCALE: 1 = .1